

## eIF4B (Phospho-Ser406) Rabbit mAb

Catalog No: #14278

Package Size: #14278-1 50ul #14278-2 100ul

Orders: order@signalwayantibody.com

Support: tech@signalwayantibody.com

## Description

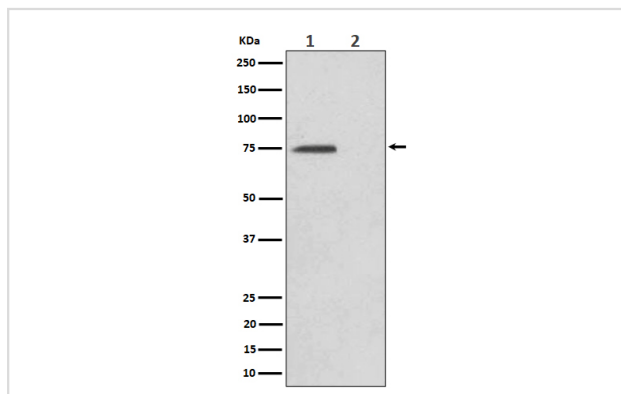
Product Name	eIF4B (Phospho-Ser406) Rabbit mAb
Host Species	Rabbit
Clonality	Monoclonal
Isotype	Rabbit IgG
Purification	Affinity-chromatography
Applications	WB IHC
Species Reactivity	Human Mouse Rat
Specificity	Phospho-eIF4B (S406) Antibody detects endogenous levels of total Phospho-eIF4B (S406)
Immunogen Description	A synthesized peptide derived from human Phospho-eIF4B (S406)
Other Names	EIF4B;
Accession No.	Uniprot:P23588
Uniprot	P23588
Calculated MW	75kDa
Formulation	Rabbit IgG in phosphate buffered saline , pH 7.4, 150mM NaCl, 0.02% sodium azide and 50% glycerol.
Storage	Store at +4Λ C short term. Store at -20Λ C long term. Avoid freeze / thaw cycle.

## Application Details

WB: 1:500~1:2000

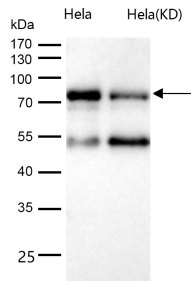
IHC: 1:50~1:200

## Images



Western blot analysis of Phospho-eIF4B (S406) expression in (1) HeLa cell lysate; (2) HeLa cell treated with Alkaline Phosphatase lysate.

All lanes use the Antibody at 1:1K dilution for 1 hour at room temperature.



## Product Description

Required for the binding of mRNA to ribosomes. Functions in close association with EIF4-F and EIF4-A. Binds near the 5'-terminal cap of mRNA in presence of EIF-4F and ATP. Promotes the ATPase activity and the ATP-dependent RNA unwinding activity of both EIF4-A and EIF4-F.

Note: This product is for in vitro research use only