

## Nucleolin (Phospho-Thr76) Rabbit mAb

Catalog No: #14280

Package Size: #14280-1 50ul #14280-2 100ul

Orders: [order@signalwayantibody.com](mailto:order@signalwayantibody.com)Support: [tech@signalwayantibody.com](mailto:tech@signalwayantibody.com)

## Description

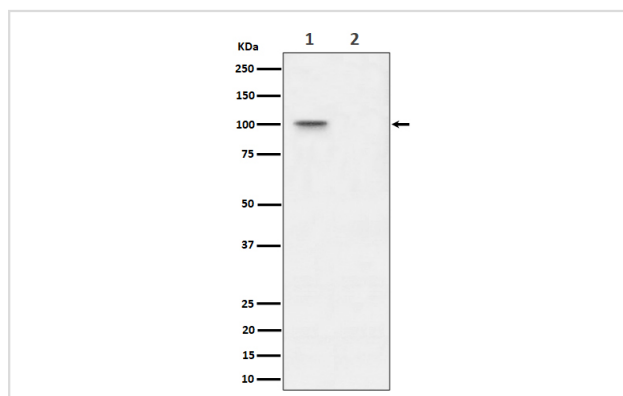
Product Name	Nucleolin (Phospho-Thr76) Rabbit mAb
Host Species	Rabbit
Clonality	Monoclonal
Isotype	Rabbit IgG
Purification	Affinity-chromatography
Applications	WB IHC
Species Reactivity	Human
Specificity	Phospho-Nucleolin (T76) Antibody detects endogenous levels of total Phospho-Nucleolin (T76)
Immunogen Description	A synthesized peptide derived from human Phospho-Nucleolin (T76)
Other Names	MS1116; NCL; Nucl; Nucleolin; Protein C23;
Accession No.	Uniprot:P19338
Uniprot	P19338
Calculated MW	100kDa
Formulation	Rabbit IgG in phosphate buffered saline , pH 7.4, 150mM NaCl, 0.02% sodium azide and 50% glycerol.
Storage	Store at +4 $\Lambda$ C short term. Store at -20 $\Lambda$ C long term. Avoid freeze / thaw cycle.

## Application Details

WB:1:500~1:2000

IHC:1:50~1:200

## Images



Western blot analysis of Phospho-Nucleolin (T76) expression in (1) 293T cell lysate; (2) 293T cell treated with Lambda Phosphatase lysate.

## Product Description

Nucleolin is the major nucleolar protein of growing eukaryotic cells. It is found associated with intranucleolar chromatin and pre-ribosomal particles. It induces chromatin decondensation by binding to histone H1.

---

Note: This product is for in vitro research use only