

MDM2 (Phospho-Ser166) Rabbit mAb

Catalog No: #14281

Package Size: #14281-1 50ul #14281-2 100ul

Orders: order@signalwayantibody.com

Support: tech@signalwayantibody.com

Description

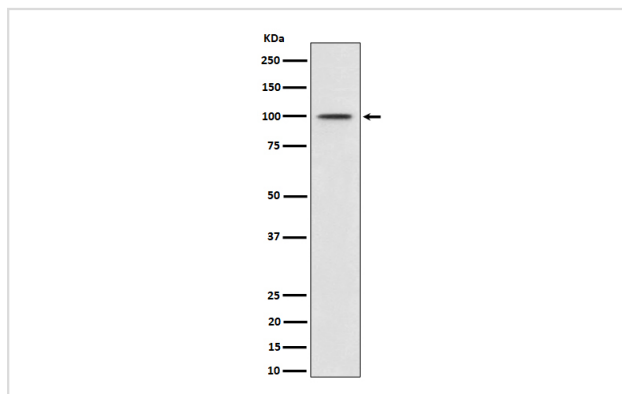
Product Name	MDM2 (Phospho-Ser166) Rabbit mAb
Host Species	Rabbit
Clonality	Monoclonal
Isotype	Rabbit IgG
Purification	Affinity-chromatography
Applications	WB IHC
Species Reactivity	Human
Specificity	Phospho-MDM2 (S166) Antibody detects endogenous levels of total Phospho-MDM2 (S166)
Immunogen Description	A synthesized peptide derived from human Phospho-MDM2 (S166)
Other Names	ACTFS; Hdm2; HDMX; MDM2; MDM2BP; MTBP;
Accession No.	Uniprot:Q00987
Uniprot	Q00987
Calculated MW	100kDa
Formulation	Rabbit IgG in phosphate buffered saline , pH 7.4, 150mM NaCl, 0.02% sodium azide and 50% glycerol.
Storage	Store at +4Λ C short term. Store at -20Λ C long term. Avoid freeze / thaw cycle.

Application Details

WB: 1:500~1:2000

IHC: 1:50~1:200

Images



Western blot analysis of Phospho-MDM2 (S166) expression in MCF7 cell treated with IGF-1 lysate.

Product Description

E3 ubiquitin-protein ligase that mediates ubiquitination of p53/TP53, leading to its degradation by the proteasome. Inhibits p53/TP53- and p73/TP73-mediated cell cycle arrest and apoptosis by binding its transcriptional activation domain.

Note: This product is for in vitro research use only