

Tau (Phospho-Ser404) Rabbit mAb

Catalog No: #14288

Package Size: #14288-1 50ul #14288-2 100ul

Orders: order@signalwayantibody.com

Support: tech@signalwayantibody.com

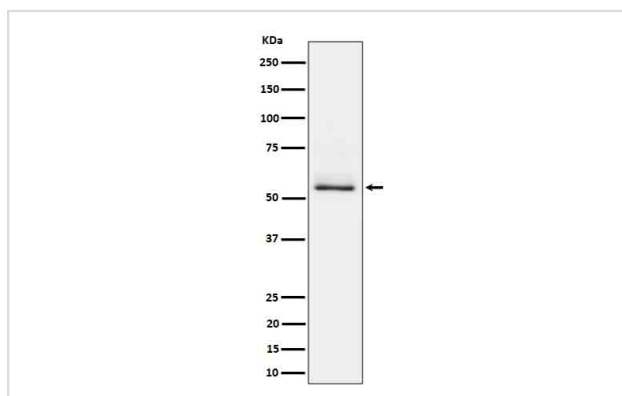
Description

| | |
|-----------------------|---|
| Product Name | Tau (Phospho-Ser404) Rabbit mAb |
| Host Species | Rabbit |
| Clonality | Monoclonal |
| Isotype | Rabbit IgG |
| Purification | Affinity-chromatography |
| Applications | WB IHC ICC/IF IP |
| Species Reactivity | Human Mouse Rat |
| Specificity | Phospho-Tau (S404) Antibody detects endogenous levels of total Phospho-Tau (S404) |
| Immunogen Description | A synthesized peptide derived from human Phospho-Tau (S404) |
| Other Names | MAPT; Microtubule-associated protein tau; MTBT1; Neurofibrillary tangle protein; Paired helical filament-tau; PHF-tau |
| Accession No. | Uniprot:P10636 |
| Uniprot | P10636 |
| Calculated MW | 50-70kDa |
| Formulation | Rabbit IgG in phosphate buffered saline , pH 7.4, 150mM NaCl, 0.02% sodium azide and 50% glycerol. |
| Storage | Store at +4 Λ C short term. Store at -20 Λ C long term. Avoid freeze / thaw cycle. |

Application Details

WB:1:500~1:2000IHC:1:50~1:100ICC/IF:1:50~1:100IP:1:50

Images



Western blot analysis of Phospho-Tau (S404) expression in mouse brain cell lysate.

Product Description

Promotes microtubule assembly and stability, and might be involved in the establishment and maintenance of neuronal polarity. The C-terminus binds axonal microtubules while the N-terminus binds neural plasma membrane components, suggesting that tau functions as a linker protein between both.

Note: This product is for in vitro research use only