

Lrp2 / Megalin Rabbit mAb

Catalog No: #56000

Package Size: #56000-1 50ul #56000-2 100ul

Orders: order@signalwayantibody.com

Support: tech@signalwayantibody.com

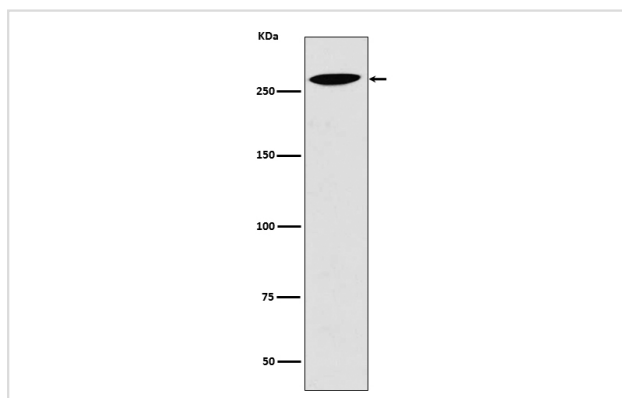
Description

Product Name	Lrp2 / Megalin Rabbit mAb
Host Species	Rabbit
Clonality	Monoclonal
Isotype	Rabbit IgG
Purification	Affinity-chromatography
Applications	WB
Species Reactivity	Human Mouse Rat
Specificity	Lrp2 / Megalin Antibody detects endogenous levels of total Lrp2 / Megalin
Immunogen Description	A synthesized peptide derived from human Lrp2 / Megalin
Other Names	Low-density lipoprotein receptor-related protein 2; LRP-2; Glycoprotein 330; gp330; Megalin; LRP2; DBS;
Accession No.	Uniprot:P98164
Uniprot	P98164
Calculated MW	280kDa
Formulation	Rabbit IgG in phosphate buffered saline , pH 7.4, 150mM NaCl, 0.02% sodium azide and 50% glycerol.
Storage	Store at +4 Λ C short term. Store at -20 Λ C long term. Avoid freeze / thaw cycle.

Application Details

WB: 1:500~1:2000

Images



Western blot analysis of Lrp2 expression in 293T cell lysate.

Product Description

LRP2, also named as gp330 and Megalin, belongs to the LDLR family. It acts together with cubilin to mediate HDL endocytosis. LRP2 may participate in regulation of parathyroid-hormone and para-thyroid-hormone-related protein release. Defects in LRP2 are the cause of Donnai-Barrow syndrome (DBS). The antibody is specific to LRP2.

Note: This product is for in vitro research use only