

PRC1 Rabbit mAb

Catalog No: #56001

Package Size: #56001-1 50ul #56001-2 100ul

Orders: order@signalwayantibody.com

Support: tech@signalwayantibody.com

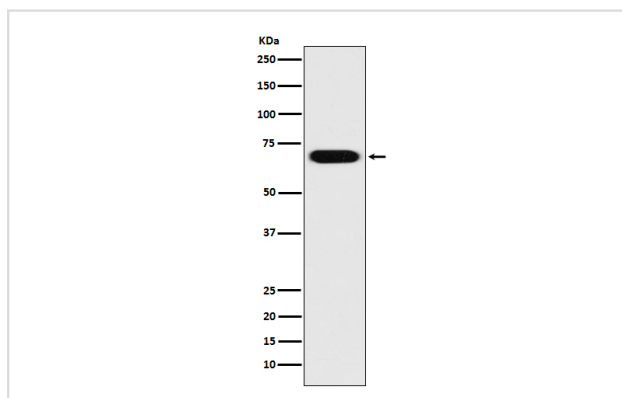
Description

Product Name	PRC1 Rabbit mAb
Host Species	Rabbit
Clonality	Monoclonal
Isotype	Rabbit IgG
Purification	Affinity-chromatography
Applications	WB IHC ICC/IF IP FC
Species Reactivity	Human Mouse Rat
Specificity	PRC1 Antibody detects endogenous levels of total PRC1
Immunogen Description	A synthesized peptide derived from human PRC1
Other Names	ASE1; PRC1; Protein regulating cytokinesis 1;
Accession No.	Uniprot:O43663
Uniprot	O43663
Calculated MW	72kDa
Formulation	Rabbit IgG in phosphate buffered saline , pH 7.4, 150mM NaCl, 0.02% sodium azide and 50% glycerol.
Storage	Store at +4 Λ C short term. Store at -20 Λ C long term. Avoid freeze / thaw cycle.

Application Details

WB:1:500~1:2000IHC:1:50~1:200ICC/IF:1:50~1:200IP:1:50FC:1:50

Images



Western blot analysis of PRC1 expression in HeLa cell lysate.

Product Description

Cross-links antiparrallel microtubules at an average distance of 35 nM. Essential for controlling the spatiotemporal formation of the midzone and successful cytokinesis. Required for KIF14 localization to the central spindle and midbody.

Note: This product is for in vitro research use only