

CCR9 Rabbit mAb

Catalog No: #56006

Package Size: #56006-1 50ul #56006-2 100ul

Orders: order@signalwayantibody.com

Support: tech@signalwayantibody.com

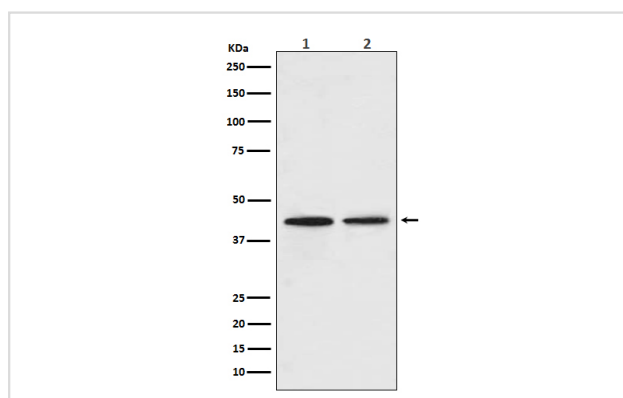
Description

Product Name	CCR9 Rabbit mAb
Host Species	Rabbit
Clonality	Monoclonal
Isotype	Rabbit IgG
Purification	Affinity-chromatography
Applications	WB ICC/IF FC
Species Reactivity	Human Mouse Rat
Specificity	CCR9 Antibody detects endogenous levels of total CCR9
Immunogen Description	A synthesized peptide derived from human CCR9
Other Names	G-protein coupled receptor 28; GPR-9-6; CDw199;CCR9
Accession No.	Uniprot:P51686
Uniprot	P51686
Calculated MW	45kDa
Formulation	Rabbit IgG in phosphate buffered saline , pH 7.4, 150mM NaCl, 0.02% sodium azide and 50% glycerol.
Storage	Store at +4Λ C short term. Store at -20Λ C long term. Avoid freeze / thaw cycle.

Application Details

WB:1:500~1:2000ICC/IF:1:50~1:200FC:1:50

Images



Western blot analysis of CCR9 in (1) A549 cell lysate; (2) Daudi cell lysate.

Product Description

Receptor for chemokine SCYA25/TECK. Subsequently transduces a signal by increasing the intracellular calcium ions level. Alternative coreceptor with CD4 for HIV-1 infection.

Note: This product is for in vitro research use only