

## PKN2 Rabbit mAb

Catalog No: #56007

Package Size: #56007-1 50ul #56007-2 100ul

Orders: order@signalwayantibody.com

Support: tech@signalwayantibody.com

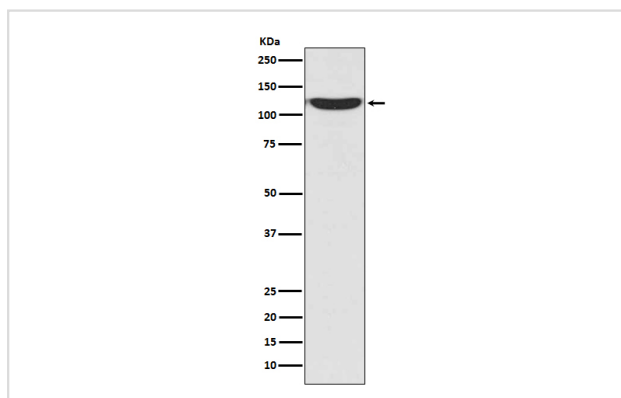
## Description

Product Name	PKN2 Rabbit mAb
Host Species	Rabbit
Clonality	Monoclonal
Isotype	Rabbit IgG
Purification	Affinity-chromatography
Applications	WB IHC ICC/IF IP FC
Species Reactivity	Human Mouse Rat
Specificity	PKN2 Antibody detects endogenous levels of total PKN2
Immunogen Description	A synthesized peptide derived from human PKN2
Other Names	PKN2; PAK2; PRK2; Pak-2; PRKCL2; PRO2042;
Accession No.	Uniprot:Q16513
Uniprot	Q16513
Calculated MW	112kDa
Formulation	Rabbit IgG in phosphate buffered saline , pH 7.4, 150mM NaCl, 0.02% sodium azide and 50% glycerol.
Storage	Store at +4 $\Lambda$ C short term. Store at -20 $\Lambda$ C long term. Avoid freeze / thaw cycle.

## Application Details

WB:1:500~1:2000IHC:1:50~1:200ICC/IF:1:50~1:200IP:1:50FC:1:50

## Images



Western blot analysis of PKN2 in 293T cell lysate.

## Product Description

PKC-related serine/threonine-protein kinase and Rho/Rac effector protein that participates in specific signal transduction responses in the cell. Plays a role in the regulation of cell cycle progression, actin cytoskeleton assembly, cell migration, cell adhesion, tumor cell invasion and transcription activation signaling processes. Phosphorylates CTTN in hyaluronan-induced astrocytes and hence decreases CTTN ability to associate with filamentous actin.

---

Note: This product is for in vitro research use only