

## SETD7 Rabbit mAb

Catalog No: #56009

Package Size: #56009-1 50ul #56009-2 100ul

Orders: order@signalwayantibody.com

Support: tech@signalwayantibody.com

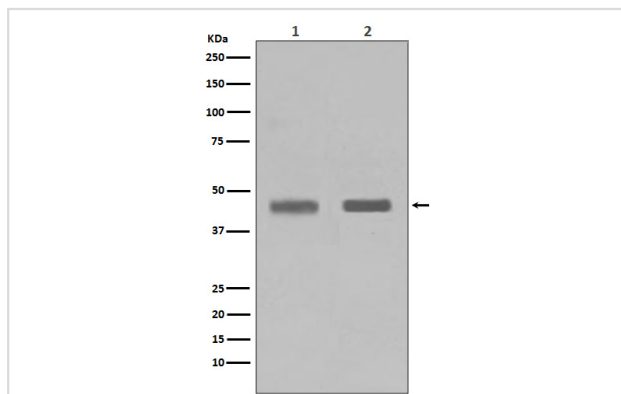
## Description

Product Name	SETD7 Rabbit mAb
Host Species	Rabbit
Clonality	Monoclonal
Isotype	Rabbit IgG
Purification	Affinity-chromatography
Applications	WB IP
Species Reactivity	Human Mouse Rat
Specificity	SETD7 Antibody detects endogenous levels of total SETD7
Immunogen Description	A synthesized peptide derived from human SETD7
Other Names	Histone H3-K4 methyltransferase SETD7; Lysine N-methyltransferase 7; SET domain-containing protein 7; SET7;SET9;
Accession No.	Uniprot:Q8WTS6
Uniprot	Q8WTS6
Calculated MW	41kDa
Formulation	Rabbit IgG in phosphate buffered saline , pH 7.4, 150mM NaCl, 0.02% sodium azide and 50% glycerol.
Storage	Store at +4 $\Lambda$ C short term. Store at -20 $\Lambda$ C long term. Avoid freeze / thaw cycle.

## Application Details

WB:1:500~1:2000IP:1:50

## Images



Western blot analysis of SETD7 in (1) Jurkat cell lysate; (2) HeLa cell lysate.

## Product Description

Histone methyltransferase that specifically monomethylates 'Lys-4' of histone H3. H3 'Lys-4' methylation represents a specific tag for epigenetic transcriptional activation. Plays a central role in the transcriptional activation of genes such as collagenase or insulin. Recruited by IPF1/PDX-1 to the insulin promoter, leading to activate transcription.

---

Note: This product is for in vitro research use only