

PTBP2 Rabbit mAb

Catalog No: #56010

Package Size: #56010-1 50ul #56010-2 100ul

Orders: order@signalwayantibody.comSupport: tech@signalwayantibody.com

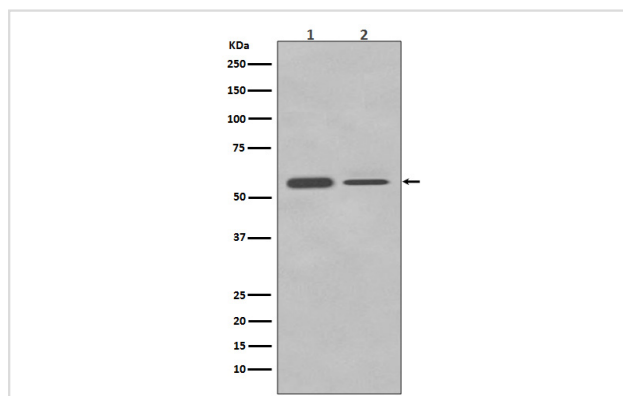
Description

Product Name	PTBP2 Rabbit mAb
Host Species	Rabbit
Clonality	Monoclonal
Isotype	Rabbit IgG
Purification	Affinity-chromatography
Applications	WB IHC ICC/IF
Species Reactivity	Human Mouse Rat
Specificity	PTBP2 Antibody detects endogenous levels of total PTBP2
Immunogen Description	A synthesized peptide derived from human PTBP2
Other Names	brPTB; MIBP; nPTB; Polypyrimidine tract binding protein 2; PTB like protein; PTBP 2Ptpb2; Splicing regulator;
Accession No.	Uniprot:Q9UKA9
Uniprot	Q9UKA9
Calculated MW	57kDa
Formulation	Rabbit IgG in phosphate buffered saline , pH 7.4, 150mM NaCl, 0.02% sodium azide and 50% glycerol.
Storage	Store at +4Λ C short term. Store at -20Λ C long term. Avoid freeze / thaw cycle.

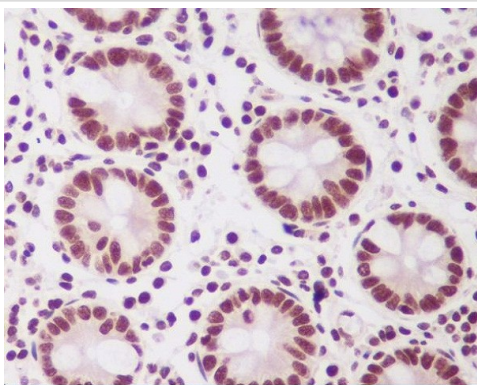
Application Details

WB:1:500~1:2000IHC:1:50~1:200ICC/IF:1:50~1:200

Images



Western blot analysis of PTBP2 in (1) Neuro-2a cell lysate; (2) HeLa cell lysate.



Immunohistochemical analysis of paraffin-embedded human colon, using PTBP2 Antibody.

Product Description

RNA-binding protein which binds to intronic polypyrimidine tracts and mediates negative regulation of exons splicing. May antagonize in a tissue-specific manner the ability of NOVA1 to activate exon selection. In addition to its function in pre-mRNA splicing, plays also a role in the regulation of translation. Isoform 5 has a reduced affinity for RNA.

Note: This product is for in vitro research use only