

Pygopus 2 Rabbit mAb

Catalog No: #56011

Package Size: #56011-1 50ul #56011-2 100ul

Orders: order@signalwayantibody.com

Support: tech@signalwayantibody.com

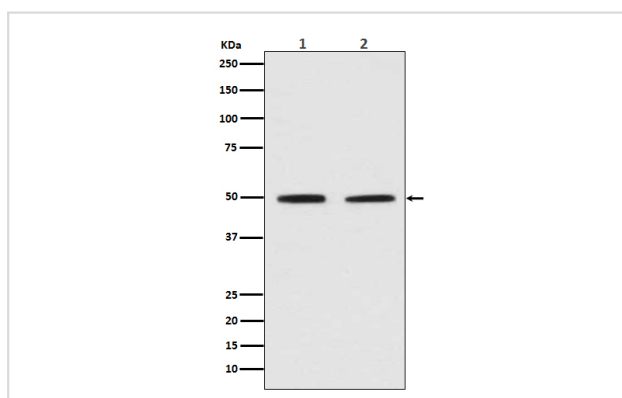
Description

Product Name	Pygopus 2 Rabbit mAb
Host Species	Rabbit
Clonality	Monoclonal
Isotype	Rabbit IgG
Purification	Affinity-chromatography
Applications	WB IHC ICC/IF
Species Reactivity	Human Mouse
Specificity	Pygopus 2 Antibody detects endogenous levels of total Pygopus 2
Immunogen Description	A synthesized peptide derived from human Pygopus 2
Other Names	PP7910; PYGO2; Pygo2 protein; Pygopus 2;
Accession No.	Uniprot:Q9BRQ0
Uniprot	Q9BRQ0
Calculated MW	41kDa
Formulation	Rabbit IgG in phosphate buffered saline , pH 7.4, 150mM NaCl, 0.02% sodium azide and 50% glycerol.
Storage	Store at +4 Λ C short term. Store at -20 Λ C long term. Avoid freeze / thaw cycle.

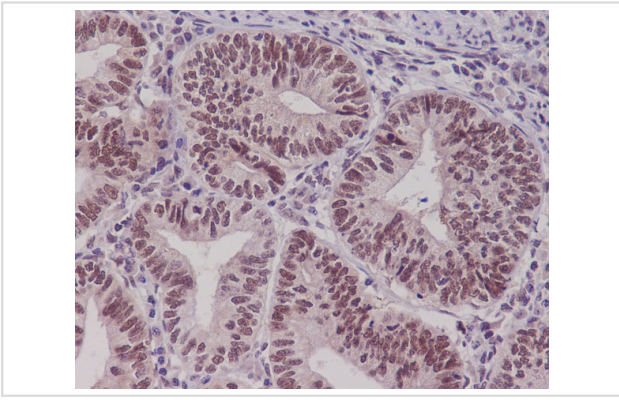
Application Details

WB:1:500~1:2000IHC:1:50~1:200ICC/IF:1:50~1:200

Images



Western blot analysis of Pygopus 2 in (1) HeLa cell lysate; (2) MCF-7 cell lysate.



Immunohistochemical analysis of paraffin-embedded human uterus, using Pygopus 2 Antibody.

Product Description

Pygopus 2 is Involved in signal transduction through the Wnt pathway.

Note: This product is for in vitro research use only