

p21 Rabbit mAb

Catalog No: #56012

Package Size: #56012-1 50ul #56012-2 100ul

Orders: order@signalwayantibody.com

Support: tech@signalwayantibody.com

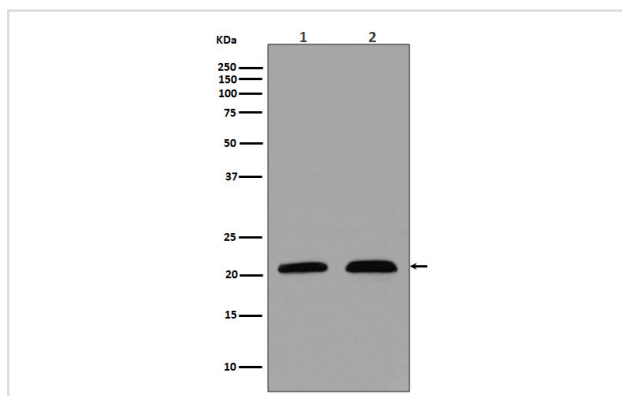
Description

Product Name	p21 Rabbit mAb
Host Species	Rabbit
Clonality	Monoclonal
Isotype	Rabbit IgG
Purification	Affinity-chromatography
Applications	WB IHC ICC/IF IP
Species Reactivity	Human
Specificity	p21 Antibody detects endogenous levels of total p21
Immunogen Description	A synthesized peptide derived from human p21
Other Names	CAP20; CDKN1; CIP1; MDA-6; P21; SDI1; WAF1; P21cip1;
Accession No.	Uniprot:P38936
Uniprot	P38936
Calculated MW	21kDa
Formulation	Rabbit IgG in phosphate buffered saline , pH 7.4, 150mM NaCl, 0.02% sodium azide and 50% glycerol.
Storage	Store at +4 Λ C short term. Store at -20 Λ C long term. Avoid freeze / thaw cycle.

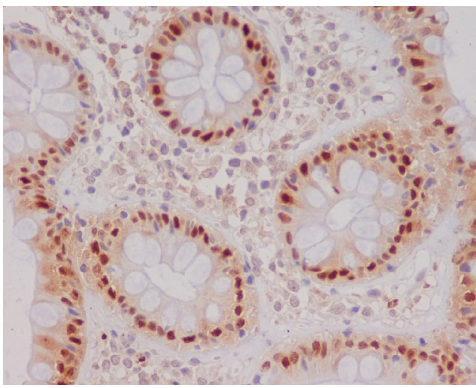
Application Details

WB:1:500~1:2000IHC:1:50~1:200ICC/IF:1:50~1:200IP:1:50

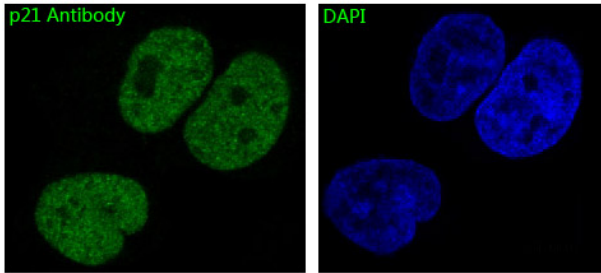
Images



Western blot analysis of p21 in (1) MCF-7 cell lysate; (2) LnCaP cell lysate.



Immunohistochemical analysis of paraffin-embedded human colon, using p21 Antibody.



Immunofluorescent analysis of MCF7 cells, using p21 Antibody .

Product Description

The tumor suppressor protein p21 Waf1/Cip1 acts as an inhibitor of cell cycle progression. It functions in stoichiometric relationships forming heterotrimeric complexes with cyclins and cyclin-dependent kinases. In association with CDK2 complexes, it serves to inhibit kinase activity and block progression through G1/S. However, p21 may also enhance assembly and activity in complexes of CDK4 or CDK6 and cyclin D.

Note: This product is for in vitro research use only