

Beclin 1 Rabbit mAb

Catalog No: #56013



Package Size: #56013-1 50ul #56013-2 100ul

Orders: [order@signalwayantibody.com](mailto:order@signalwayantibody.com)  
Support: [tech@signalwayantibody.com](mailto:tech@signalwayantibody.com)

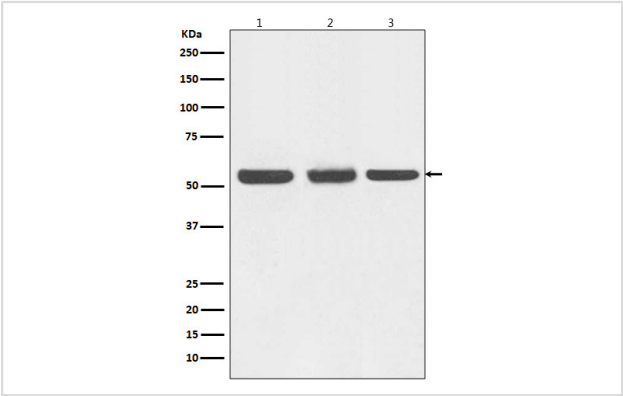
Description

Product Name	Beclin 1 Rabbit mAb
Host Species	Rabbit
Clonality	Monoclonal
Isotype	Rabbit IgG
Purification	Affinity-chromatography
Applications	WB IHC ICC/IF
Species Reactivity	Human Mouse Rat
Specificity	Beclin 1 Antibody detects endogenous levels of total Beclin 1
Immunogen Description	A synthesized peptide derived from human Beclin 1
Other Names	ATG6; ATG6 autophagy related 6 homolog; Bcl-2-interacting protein beclin; Beclin 1 autophagy related;Beclin-1;Beclin1; BECN1; Protein GT197; VPS30;
Accession No.	Uniprot:Q14457
Uniprot	Q14457
Calculated MW	55KDa
Formulation	Rabbit IgG in phosphate buffered saline , pH 7.4, 150mM NaCl, 0.02% sodium azide and 50% glycerol.
Storage	Store at +4Λ C short term. Store at -20Λ C long term. Avoid freeze / thaw cycle.

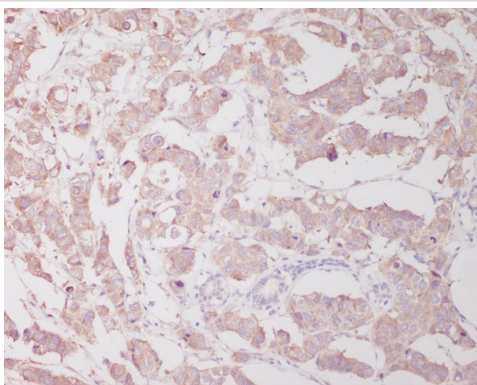
Application Details

WB:1:500~1:2000IHC:1:50~1:200ICC/IF:1:50~1:200

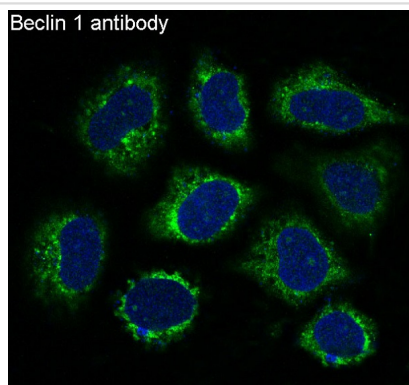
Images



Western blot analysis of Beclin 1 expression in (1) HEK293 cell lysate; (2) NIH/3T3 cell lysate; (3) C6 cell lysate.



Immunohistochemical analysis of paraffin-embedded human breast cancer, using Beclin 1 Antibody.



Immunofluorescent analysis of HeLa cells, using Beclin 1 Antibody.

## Product Description

Plays a central role in autophagy. Required for the abscission step in cytokinesis. May play a role in antiviral host defense. Protects against infection by a neurovirulent strain of Sindbis virus.

Note: This product is for in vitro research use only