

ENO1 Rabbit mAb

Catalog No: #56015

Package Size: #56015-1 50ul #56015-2 100ul

Orders: order@signalwayantibody.comSupport: tech@signalwayantibody.com

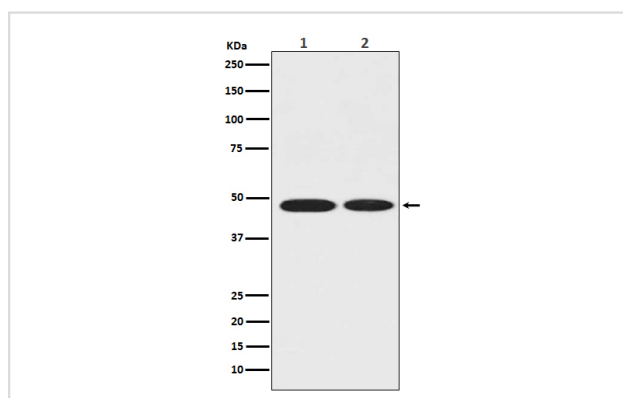
Description

| | |
|-----------------------|--|
| Product Name | ENO1 Rabbit mAb |
| Host Species | Rabbit |
| Clonality | Monoclonal |
| Isotype | Rabbit IgG |
| Purification | Affinity-chromatography |
| Applications | WB ICC/IF IP |
| Species Reactivity | Human Mouse Rat |
| Specificity | ENO1 Antibody detects endogenous levels of total ENO1 |
| Immunogen Description | A synthesized peptide derived from human ENO1 |
| Other Names | ENO1;ENO1L1;MBP-1;MPB1;NNE;PPH; |
| Accession No. | Uniprot:P06733 |
| Uniprot | P06733 |
| Calculated MW | 47kDa |
| Formulation | Rabbit IgG in phosphate buffered saline , pH 7.4, 150mM NaCl, 0.02% sodium azide and 50% glycerol. |
| Storage | Store at +4 Λ C short term. Store at -20 Λ C long term. Avoid freeze / thaw cycle. |

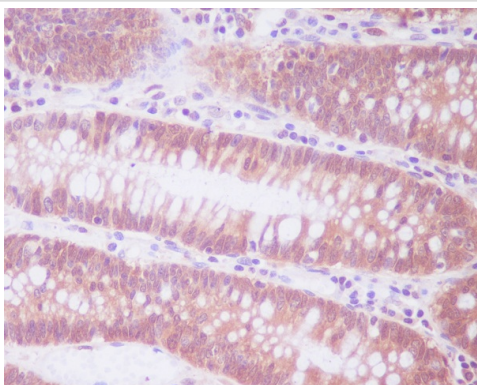
Application Details

WB:1:500~1:2000ICC/IF:1:50~1:200IP:1:50

Images



Western blot analysis of ENO1 in (1)MCF-7 whole cell lysate;
(2)Rat brain tissue lysate.



Immunohistochemical analysis of paraffin-embedded human colon, using ENO1 Antibody.

Product Description

Enolase is an important glycolytic enzyme involved in the interconversion of 2-phosphoglycerate to phosphoenolpyruvate. Mammalian enolase exists as three subunits: enolase-1 (α -enolase), enolase-2 (γ -enolase) and enolase-3 (β -enolase) that can form both homo- and heterodimers. Expression of the enolase isoforms differs in a tissue specific manner.

Note: This product is for in vitro research use only