

## LRRK2 Rabbit mAb

Catalog No: #56018

Package Size: #56018-1 50ul #56018-2 100ul

Orders: [order@signalwayantibody.com](mailto:order@signalwayantibody.com)Support: [tech@signalwayantibody.com](mailto:tech@signalwayantibody.com)

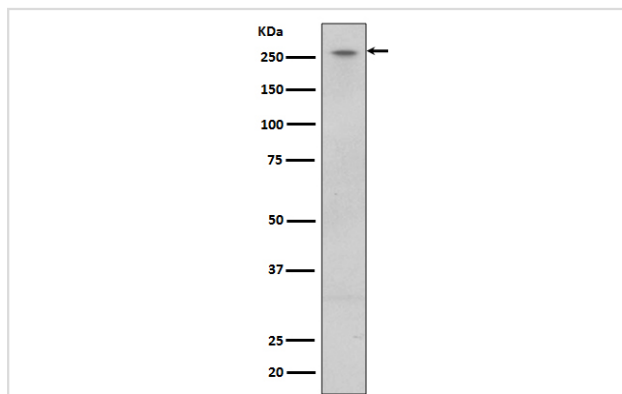
## Description

Product Name	LRRK2 Rabbit mAb
Host Species	Rabbit
Clonality	Monoclonal
Isotype	Rabbit IgG
Purification	Affinity-chromatography
Applications	WB IHC ICC/IF IP
Species Reactivity	Human Mouse Rat
Specificity	LRRK2 Antibody detects endogenous levels of total LRRK2
Immunogen Description	A synthesized peptide derived from human LRRK2
Other Names	AURA17; Dardarin antibody;; Leucine rich repeat kinase 2; LRRK 2 antibody; LRRK2; LRRK2_HUMAN; PARK 8; PARK8; RIPK7; ROCO 2; ROCO2;
Accession No.	Uniprot:Q5S007
Uniprot	Q5S007
Calculated MW	280kDa
Formulation	Rabbit IgG in phosphate buffered saline , pH 7.4, 150mM NaCl, 0.02% sodium azide and 50% glycerol.
Storage	Store at +4 $\Lambda$ C short term. Store at -20 $\Lambda$ C long term. Avoid freeze / thaw cycle.

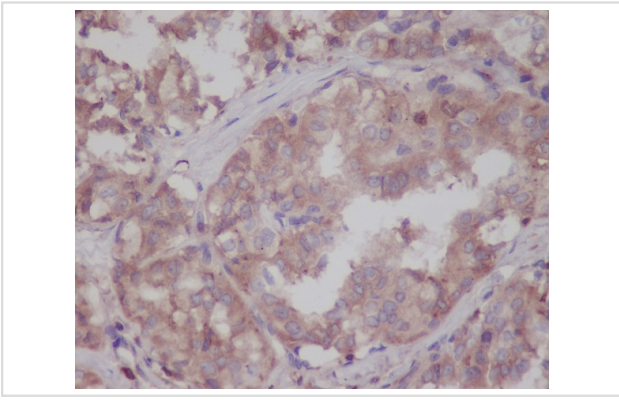
## Application Details

WB:1:500~1:2000IHC:1:50~1:200ICC/IF:1:50~1:200IP:1:50

## Images



Western blot analysis of LRRK2 expression in U87-MG cell lysate.



Immunohistochemical analysis of paraffin-embedded human thyroid, using LRRK2 Antibody.

## Product Description

Positively regulates autophagy through a calcium-dependent activation of the CaMKK/AMPK signaling pathway. The process involves activation of nicotinic acid adenine dinucleotide phosphate (NAADP) receptors, increase in lysosomal pH, and calcium release from lysosomes. Together with RAB29, plays a role in the retrograde trafficking pathway for recycling proteins, such as mannose 6 phosphate receptor (M6PR), between lysosomes and the Golgi apparatus in a retromer-dependent manner.

Note: This product is for in vitro research use only