

## LRRK2 Rabbit mAb

Catalog No: #56031

Package Size: #56031-1 50ul #56031-2 100ul

Orders: order@signalwayantibody.com

Support: tech@signalwayantibody.com

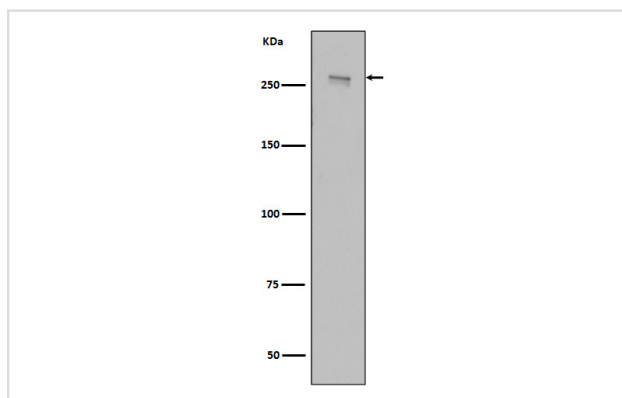
## Description

Product Name	LRRK2 Rabbit mAb
Host Species	Rabbit
Clonality	Monoclonal
Isotype	Rabbit IgG
Purification	Affinity-chromatography
Applications	WB IHC ICC/IF IP
Species Reactivity	Human Mouse Rat
Specificity	LRRK2 Antibody detects endogenous levels of total LRRK2
Immunogen Description	A synthesized peptide derived from human LRRK2
Other Names	Leucine-rich repeat serine/threonine-protein kinase 2; Dardarin; PARK8; ROCO2; RIPK7; LRRK2
Accession No.	Uniprot:Q5S007
Uniprot	Q5S007
Calculated MW	286kDa
Formulation	Rabbit IgG in phosphate buffered saline , pH 7.4, 150mM NaCl, 0.02% sodium azide and 50% glycerol.
Storage	Store at +4 $\Lambda$ C short term. Store at -20 $\Lambda$ C long term. Avoid freeze / thaw cycle.

## Application Details

WB:1:500~1:2000IHC:1:50~1:200ICC/IF:1:50~1:200IP:1:50

## Images



Western blot analysis of LRRK2 in HEK293 cell lysate transfected with 3\*Flag wild type, full length LRRK2.

## Product Description

LRRK2 positively regulates autophagy through a calcium-dependent activation of the CaMKK/AMPK signaling pathway. The process involves activation of nicotinic acid adenine dinucleotide phosphate (NAADP) receptors, increase in lysosomal pH, and calcium release from lysosomes. Together with RAB29, plays a role in the retrograde trafficking pathway for recycling proteins, such as mannose 6 phosphate receptor (M6PR), between lysosomes and the Golgi apparatus in a retromer-dependent manner. Regulates neuronal process morphology in the intact central nervous

system (CNS). Plays a role in synaptic vesicle trafficking. Phosphorylates PRDX3. Has GTPase activity. May play a role in the phosphorylation of proteins central to Parkinson disease.

---

Note: This product is for in vitro research use only