

LRRK2 Rabbit mAb

Catalog No: #56032

Package Size: #56032-1 50ul #56032-2 100ul

Orders: order@signalwayantibody.com

Support: tech@signalwayantibody.com

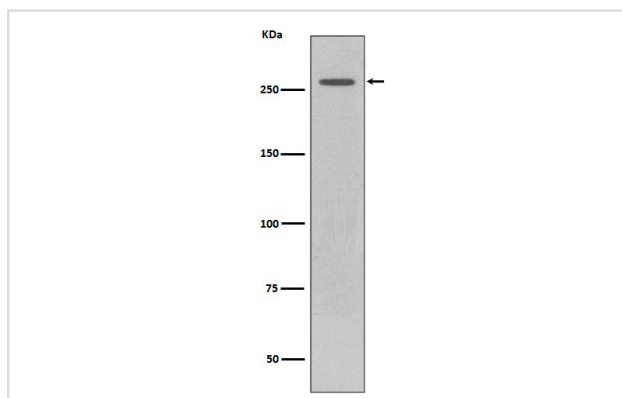
Description

Product Name	LRRK2 Rabbit mAb
Host Species	Rabbit
Clonality	Monoclonal
Isotype	Rabbit IgG
Purification	Affinity-chromatography
Applications	WB IHC ICC/IF
Species Reactivity	Human Mouse
Specificity	LRRK2 Antibody detects endogenous levels of total LRRK2
Immunogen Description	A synthesized peptide derived from human LRRK2
Other Names	Leucine-rich repeat serine/threonine-protein kinase 2; Dardarin; PARK8; ROCO2; RIPK7; LRRK2
Accession No.	Uniprot:Q5S007
Uniprot	Q5S007
Calculated MW	286kDa
Formulation	Rabbit IgG in phosphate buffered saline , pH 7.4, 150mM NaCl, 0.02% sodium azide and 50% glycerol.
Storage	Store at +4 Λ C short term. Store at -20 Λ C long term. Avoid freeze / thaw cycle.

Application Details

WB:1:500~1:2000IHC:1:50~1:200ICC/IF:1:50~1:200

Images



Western blot analysis of LRRK2 expression in GFP-LRRK2 lysate.

Product Description

LRRK2 positively regulates autophagy through a calcium-dependent activation of the CaMKK/AMPK signaling pathway. The process involves activation of nicotinic acid adenine dinucleotide phosphate (NAADP) receptors, increase in lysosomal pH, and calcium release from lysosomes. Together with RAB29, plays a role in the retrograde trafficking pathway for recycling proteins, such as mannose 6 phosphate receptor (M6PR), between lysosomes and the Golgi apparatus in a retromer-dependent manner.

Note: This product is for in vitro research use only