

HIF-1 alpha Rabbit mAb

Catalog No: #56033

Package Size: #56033-1 50ul #56033-2 100ul

Orders: order@signalwayantibody.com

Support: tech@signalwayantibody.com

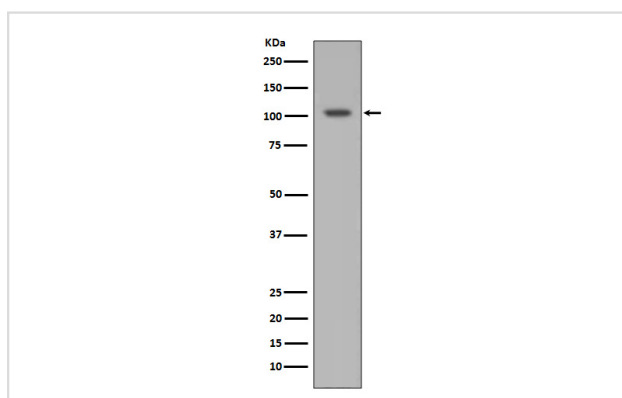
Description

Product Name	HIF-1 alpha Rabbit mAb
Host Species	Rabbit
Clonality	Monoclonal
Isotype	Rabbit IgG
Purification	Affinity-chromatography
Applications	WB IHC ICC/IF IP FC
Species Reactivity	Human
Specificity	HIF-1 alpha Antibody detects endogenous levels of total HIF-1 alpha
Immunogen Description	A synthesized peptide derived from human HIF-1 alpha
Other Names	HIF1; MOP1; PASD8; bHLHe78; HIF-1alpha; HIF1-ALPHA; HIF1A
Accession No.	Uniprot:Q16665
Uniprot	Q16665
Calculated MW	120kDa
Formulation	Rabbit IgG in phosphate buffered saline , pH 7.4, 150mM NaCl, 0.02% sodium azide and 50% glycerol.
Storage	Store at +4 Λ C short term. Store at -20 Λ C long term. Avoid freeze / thaw cycle.

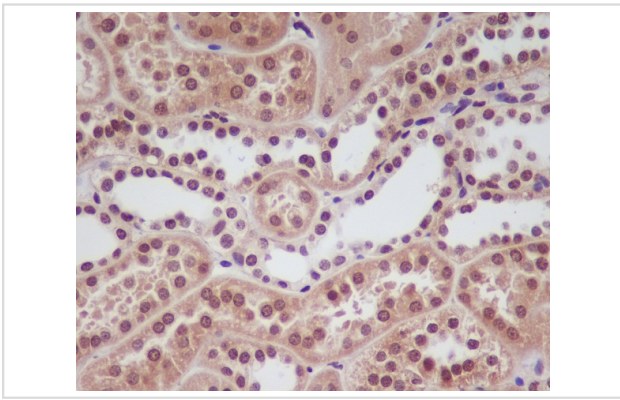
Application Details

WB:1:500~1:2000IHC:1:50~1:200ICC/IF:1:50~1:200IP:1:30FC:1:30

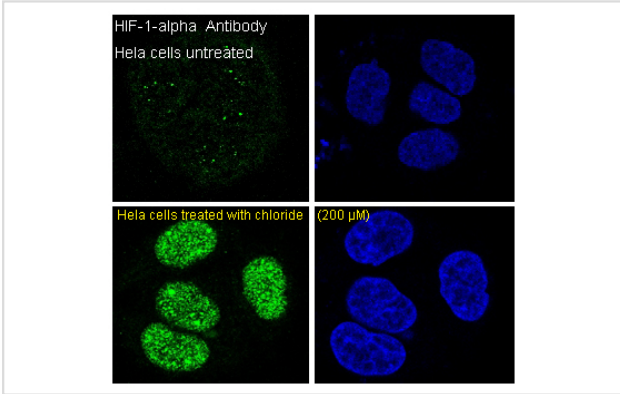
Images



Western blot analysis of HIF-1 alpha expression in Ramos cell lysate.



Immunohistochemical analysis of paraffin-embedded human kidney, using HIF-1 alpha Antibody.



Immunofluorescent analysis of HeLa cells, using HIF-1 alpha Antibody.

Product Description

Hypoxia-inducible factor-1 (HIF1) is a transcription factor found in mammalian cells cultured under reduced oxygen tension that plays an essential role in cellular and systemic homeostatic responses to hypoxia. HIF1 is a heterodimer composed of an alpha subunit and a beta subunit. The beta subunit has been identified as the aryl hydrocarbon receptor nuclear translocator (ARNT). This gene encodes the alpha subunit of HIF-1.

Note: This product is for in vitro research use only