

## MHC class 1 Rabbit mAb

Catalog No: #56034

Package Size: #56034-1 50ul #56034-2 100ul

Orders: order@signalwayantibody.com

Support: tech@signalwayantibody.com

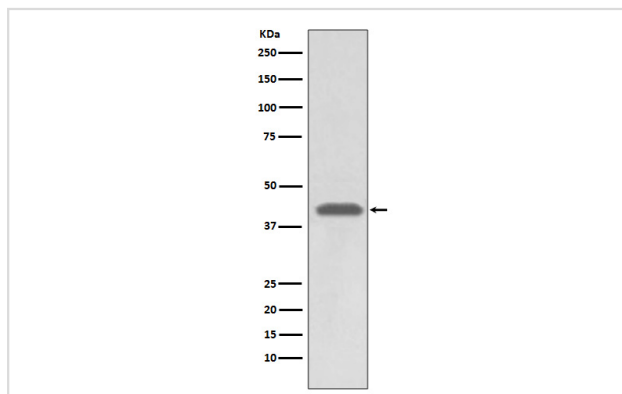
## Description

Product Name	MHC class 1 Rabbit mAb
Host Species	Rabbit
Clonality	Monoclonal
Isotype	Rabbit IgG
Purification	Affinity-chromatography
Applications	WB IHC ICC/IF IP FC
Species Reactivity	Human
Specificity	MHC class 1 Antibody detects endogenous levels of total MHC class 1
Immunogen Description	A synthesized peptide derived from human MHC class 1
Other Names	Aw-68;HLA class I histocompatibility antigen, A-28 alpha chain;MHC class I antigen A*68;HLA-A; MHC class I antigen HLA A heavy chain;
Accession No.	Uniprot:P01891
Uniprot	P01891
Calculated MW	41kDa
Formulation	Rabbit IgG in phosphate buffered saline , pH 7.4, 150mM NaCl, 0.02% sodium azide and 50% glycerol.
Storage	Store at +4Λ C short term. Store at -20Λ C long term. Avoid freeze / thaw cycle.

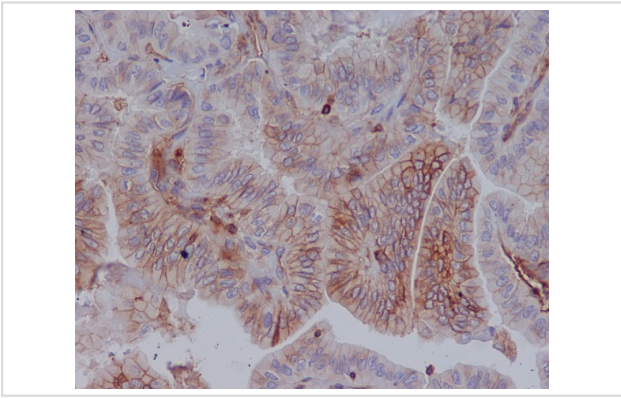
## Application Details

WB:1:500~1:2000IHC:1:50~1:200ICC/IF:1:50~1:200IP:1:50FC:1:50

## Images



Western blot analysis of MHC class 1 expression in A549 cell lysate.



Immunohistochemical analysis of paraffin-embedded human thyroid carcinoma, using MHC class 1 Antibody.

## Product Description

---

MHC class 1 is involved in the presentation of foreign antigens to the immune system.

---

Note: This product is for in vitro research use only