

UCHL3 Rabbit mAb

Catalog No: #56040

Package Size: #56040-1 50ul #56040-2 100ul

Orders: order@signalwayantibody.com

Support: tech@signalwayantibody.com

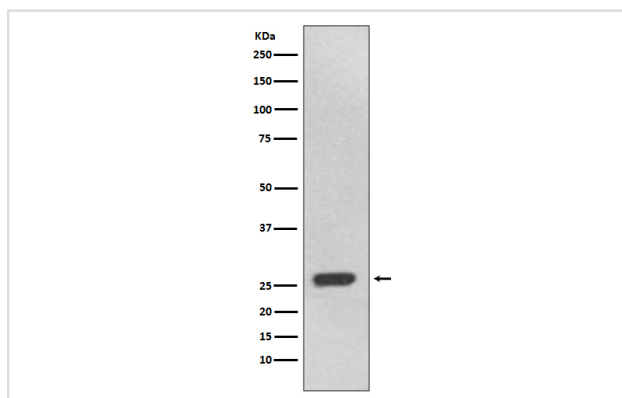
Description

Product Name	UCHL3 Rabbit mAb
Host Species	Rabbit
Clonality	Monoclonal
Isotype	Rabbit IgG
Purification	Affinity-chromatography
Applications	WB
Species Reactivity	Human Mouse Rat
Specificity	UCHL3 Antibody detects endogenous levels of total UCHL3
Immunogen Description	A synthesized peptide derived from human UCHL3
Other Names	UCH-L3; Ubiquitin thiolesterase L3; Ubiquitin carboxyl-terminal hydrolase isozyme L3;UCHL3;
Accession No.	Uniprot:P15374
Uniprot	P15374
Calculated MW	26kDa
Formulation	Rabbit IgG in phosphate buffered saline , pH 7.4, 150mM NaCl, 0.02% sodium azide and 50% glycerol.
Storage	Store at +4Λ C short term. Store at -20Λ C long term. Avoid freeze / thaw cycle.

Application Details

WB:1:1000~1:2000

Images



Western blot analysis of UCHL3 expression in 293T cell lysate.

Product Description

Deubiquitinating enzyme (DUB) that controls levels of cellular ubiquitin through processing of ubiquitin precursors and ubiquitinated proteins. Thiol protease that recognizes and hydrolyzes a peptide bond at the C-terminal glycine of either ubiquitin or NEDD8. Has a 10-fold preference for Arg and Lys at position P3", and exhibits a preference towards 'Lys-48'-linked Ubiquitin chains. Deubiquitinates ENAC in apical compartments, thereby regulating apical membrane recycling.

Note: This product is for in vitro research use only