

## WNT2 Rabbit mAb

Catalog No: #56048

Package Size: #56048-1 50ul #56048-2 100ul

Orders: order@signalwayantibody.com

Support: tech@signalwayantibody.com

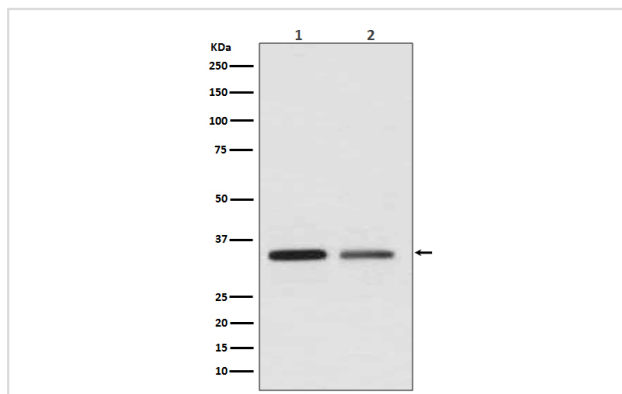
## Description

Product Name	WNT2 Rabbit mAb
Host Species	Rabbit
Clonality	Monoclonal
Isotype	Rabbit IgG
Purification	Affinity-chromatography
Applications	WB
Species Reactivity	Human Mouse Rat
Specificity	WNT2 Antibody detects endogenous levels of total WNT2
Immunogen Description	A synthesized peptide derived from human WNT2
Other Names	Int 1 related protein; INT1L 1; INT1L1; IRP; IRP protein; ONCOGENE INT1 LIKE 1; Protein Wnt-2; Secreted growth factor; Wingless type MMTV integration site family member 2; WNT2;
Accession No.	Uniprot:P09544
Uniprot	P09544
Calculated MW	34kDa
Formulation	Rabbit IgG in phosphate buffered saline , pH 7.4, 150mM NaCl, 0.02% sodium azide and 50% glycerol.
Storage	Store at +4 $\Lambda$ C short term. Store at -20 $\Lambda$ C long term. Avoid freeze / thaw cycle.

## Application Details

WB:1:500~1:2000

## Images



Western blot analysis of WNT2 expression in (1) Jurkat cell lysate; (2) SKBR-3 cell lysate.

## Product Description

Products of the highly conserved Wnt gene family, including Wnt-1 through Wnt-10, play key roles in regulating cellular growth and differentiation. Wnt-1 is a cysteine-rich, secreted glycoprotein that associates with cell membranes and likely functions as a key regulator of cellular adhesion. Wnt-1, which is essential for normal development of the embryonic nervous system, contributes to hyperplasia and tumorigenic progression when improperly

expressed in mammary tissue.

---

Note: This product is for in vitro research use only