

RAB11A Rabbit mAb

Catalog No: #56050

Package Size: #56050-1 50ul #56050-2 100ul

Orders: order@signalwayantibody.com

Support: tech@signalwayantibody.com

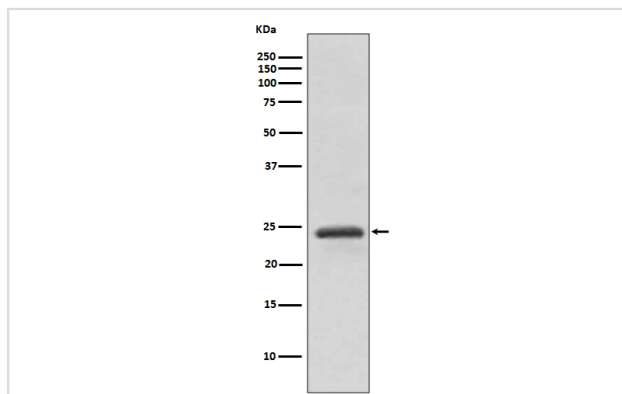
Description

Product Name	RAB11A Rabbit mAb
Host Species	Rabbit
Clonality	Monoclonal
Isotype	Rabbit IgG
Purification	Affinity-chromatography
Applications	WB IP
Species Reactivity	Human Mouse Rat
Specificity	RAB11A Antibody detects endogenous levels of total RAB11A
Immunogen Description	A synthesized peptide derived from human RAB11A
Other Names	MGC1490; Rab 11; Rab 11A; Rab-11; RAB11 A; RAB11; Rab11a; RAB11A member RAS oncogene family; Ras related protein Rab 11A; Ras related protein Rab11A; Ras-related protein Rab-11A; RB11A; YL 8; YL8;
Accession No.	Uniprot:P62491
Uniprot	P62491
Calculated MW	24kDa
Formulation	Rabbit IgG in phosphate buffered saline , pH 7.4, 150mM NaCl, 0.02% sodium azide and 50% glycerol.
Storage	Store at +4 Λ C short term. Store at -20 Λ C long term. Avoid freeze / thaw cycle.

Application Details

WB:1:1000~1:2000IP:1:30

Images



Western blot analysis of RAB11A expression in HeLa cell lysate.

Product Description

Rab11a, Rab11b and Rab25 are members of the Rab11 family of small Ras-like GTPases. Rab11 (isoforms Rab11a and Rab11b) functions as a key regulator in the recycling of perinuclear, plasma membrane and Golgi compartment endosomes. Despite some overlap, distinct differences exist between Rab11a and Rab11b in both their cellular distribution and functional roles. Rab11a is ubiquitously expressed while Rab11b is found mainly in

the heart and brain. Like other Rab proteins, Rab11 exerts its function via interactions with Rab11 family interacting proteins (FIPs).

Note: This product is for in vitro research use only