

CD22 Rabbit mAb

Catalog No: #56051

Package Size: #56051-1 50ul #56051-2 100ul

Orders: order@signalwayantibody.com

Support: tech@signalwayantibody.com

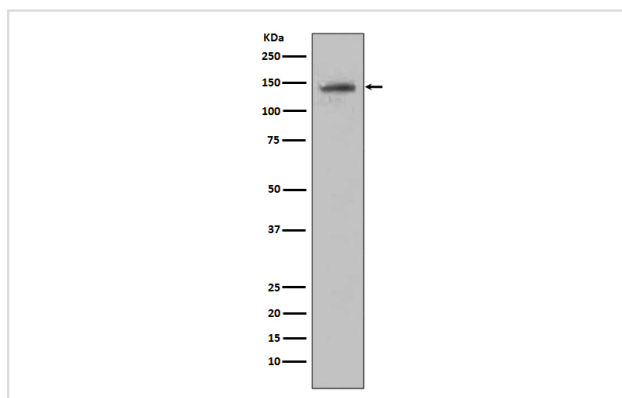
Description

| | |
|-----------------------|--|
| Product Name | CD22 Rabbit mAb |
| Host Species | Rabbit |
| Clonality | Monoclonal |
| Isotype | Rabbit IgG |
| Purification | Affinity-chromatography |
| Applications | WB |
| Species Reactivity | Human Mouse Rat |
| Specificity | CD22 Antibody detects endogenous levels of total CD22 |
| Immunogen Description | A synthesized peptide derived from human CD22 |
| Other Names | CD22; BLCAM ; Leu14; Lyb8; SIGLEC2 ; B cell receptor CD22 precursor; MGC130020; |
| Accession No. | Uniprot:P20273 |
| Uniprot | P20273 |
| Calculated MW | 150kDa |
| Formulation | Rabbit IgG in phosphate buffered saline , pH 7.4, 150mM NaCl, 0.02% sodium azide and 50% glycerol. |
| Storage | Store at +4 Λ C short term. Store at -20 Λ C long term. Avoid freeze / thaw cycle. |

Application Details

WB: 1:500~1:2000

Images



Western blot analysis of Raji cell lysate using CD22 antibody.

Product Description

Acts as a regulator of B cell signaling. CD22 is expressed as both a cytoplasmic and membrane protein during discrete stages of B cell lymphocyte differentiation. The cytoplasmic form of CD22, expressed early in B cell development, is a useful marker for acute lymphocytic leukemia. The membrane form of CD22 is expressed in mature B cells prior to their differentiation into plasma cells. Alternative splicing results in two different isoforms, CD22 α and CD22 β .

Note: This product is for in vitro research use only