

CETP Rabbit mAb

Catalog No: #56052

Package Size: #56052-1 50ul #56052-2 100ul

Orders: order@signalwayantibody.com

Support: tech@signalwayantibody.com

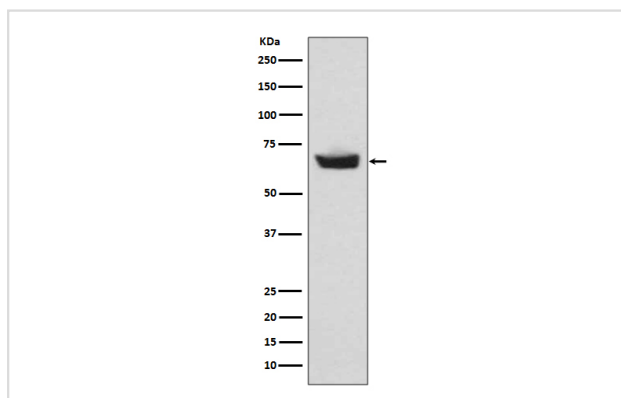
Description

Product Name	CETP Rabbit mAb
Host Species	Rabbit
Clonality	Monoclonal
Isotype	Rabbit IgG
Purification	Affinity-chromatography
Applications	WB IP
Species Reactivity	Human
Specificity	CETP Antibody detects endogenous levels of total CETP
Immunogen Description	A synthesized peptide derived from human CETP
Other Names	BPIFF; HDLCQ10;CETP; Lipid transfer protein I; Cholesteryl ester transfer protein;
Accession No.	Uniprot:P11597
Uniprot	P11597
Calculated MW	55kDa
Formulation	Rabbit IgG in phosphate buffered saline , pH 7.4, 150mM NaCl, 0.02% sodium azide and 50% glycerol.
Storage	Store at +4Λ C short term. Store at -20Λ C long term. Avoid freeze / thaw cycle.

Application Details

WB:1:500~1:2000IP:1:50

Images



Western blot analysis of CETP expression in human plasma lysate.

Product Description

Cholesteryl ester transfer protein (CETP) is a circulating metabolic enzyme that transports cholesterol from the arteries to the liver. CETP converts cholesteryl esters from antiatherogenic high density lipoproteins (HDLs) to proatherogenic apolipoprotein B (apoB)-containing lipoproteins, including very low-, intermediate-, and low-DLs. Efficient transfer and exchange of cholesteryl esters and triglycerides between the lipoprotein classes of human plasma is necessary to maintain healthy arteries.

Note: This product is for in vitro research use only