

## MMP1 Rabbit mAb

Catalog No: #56056

Package Size: #56056-1 50ul #56056-2 100ul

Orders: order@signalwayantibody.com

Support: tech@signalwayantibody.com

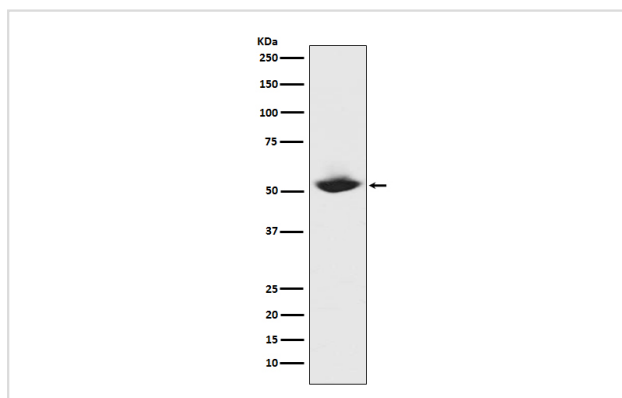
## Description

Product Name	MMP1 Rabbit mAb
Host Species	Rabbit
Clonality	Monoclonal
Isotype	Rabbit IgG
Purification	Affinity-chromatography
Applications	WB IHC ICC/IF FC
Species Reactivity	Human
Specificity	MMP1 Antibody detects endogenous levels of total MMP1
Immunogen Description	A synthesized peptide derived from human MMP1
Other Names	MMP1;CLG;CLGN; Fibroblast collagenase; Matrix metalloprotease 1;
Accession No.	Uniprot:P03956
Uniprot	P03956
Calculated MW	54kDa
Formulation	Rabbit IgG in phosphate buffered saline , pH 7.4, 150mM NaCl, 0.02% sodium azide and 50% glycerol.
Storage	Store at +4Λ C short term. Store at -20Λ C long term. Avoid freeze / thaw cycle.

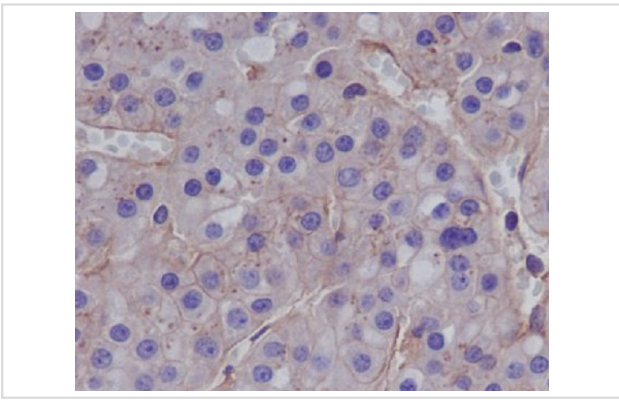
## Application Details

WB:1:500~1:2000IHC:1:50~1:200ICC:1:50~1:200FC:1:50

## Images



Western blot analysis of MMP1 expression in MMP1 recombinant protein.



Immunohistochemical analysis of paraffin-embedded human hepatocellular carcinoma, using MMP1 Antibody.

## Product Description

MMP1 Cleaves collagens of types I, II, and III at one site in the helical domain. Also cleaves collagens of types VII and X. In case of HIV infection, interacts and cleaves the secreted viral Tat protein, leading to a decrease in neuronal Tat's mediated neurotoxicity. Belongs to the peptidase M10A family.

Note: This product is for in vitro research use only