

CaMKII Rabbit mAb

Catalog No: #56058

Package Size: #56058-1 50ul #56058-2 100ul

Orders: order@signalwayantibody.com

Support: tech@signalwayantibody.com

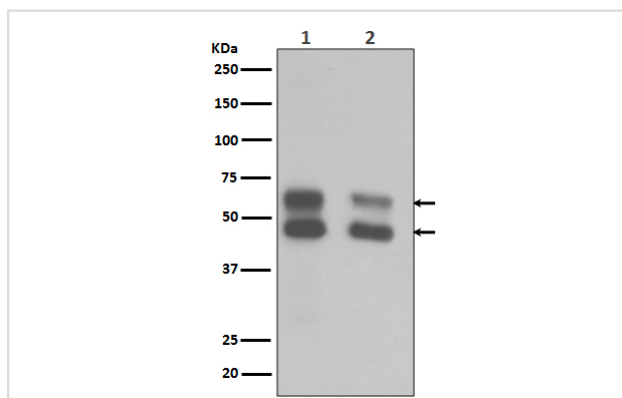
Description

Product Name	CaMKII Rabbit mAb
Host Species	Rabbit
Clonality	Monoclonal
Isotype	Rabbit IgG
Purification	Affinity-chromatography
Applications	WB IHC ICC/IF
Species Reactivity	Human Mouse Rat
Specificity	CaMKII Antibody detects endogenous levels of total CaMKII
Immunogen Description	A synthesized peptide derived from human CaMKII
Other Names	CAMK2; Camk2a; CAMK2B; CAMK2D; CAMK2G; CAMKA;
Accession No.	Uniprot:Q9UQM7/Q13554/Q13555/Q13557
Uniprot	Q9UQM7/Q13554/Q13555/Q13557
Calculated MW	45,60 kDa
Formulation	Rabbit IgG in phosphate buffered saline , pH 7.4, 150mM NaCl, 0.02% sodium azide and 50% glycerol.
Storage	Store at +4 Λ C short term. Store at -20 Λ C long term. Avoid freeze / thaw cycle.

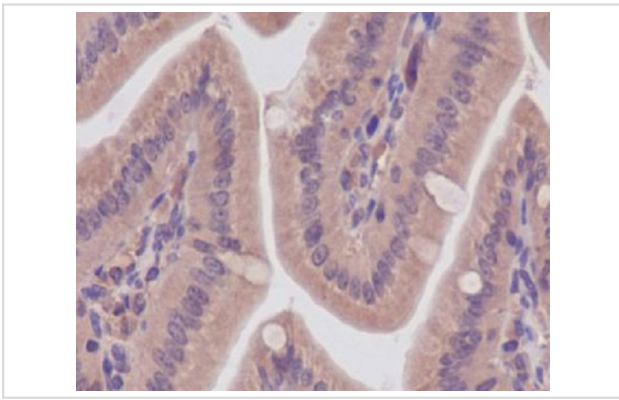
Application Details

WB:1:500~1:2000IHC:1:50~1:200ICC/IF:1:50~1:200

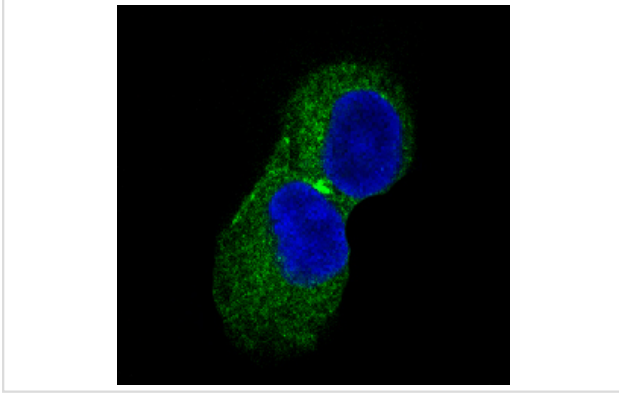
Images



Western blot analysis of CaMKII expression in (1)Mouse brain tissue lysate ;(2)Rat brain tissue lysate.



Immunohistochemical analysis of paraffin-embedded mouse colon, using CaMKII Antibody.



Immunofluorescent analysis of PC-12 cells, using CaMKII Antibody .

Product Description

CaM-kinase II (CAMK2) is a prominent kinase in the central nervous system that may function in long-term potentiation and neurotransmitter release. Member of the NMDAR signaling complex in excitatory synapses it may regulate NMDAR-dependent potentiation of the AMPAR and synaptic plasticity.

Note: This product is for in vitro research use only