

MRP8 Rabbit mAb

Catalog No: #56059

Package Size: #56059-1 50ul #56059-2 100ul

Orders: order@signalwayantibody.com

Support: tech@signalwayantibody.com

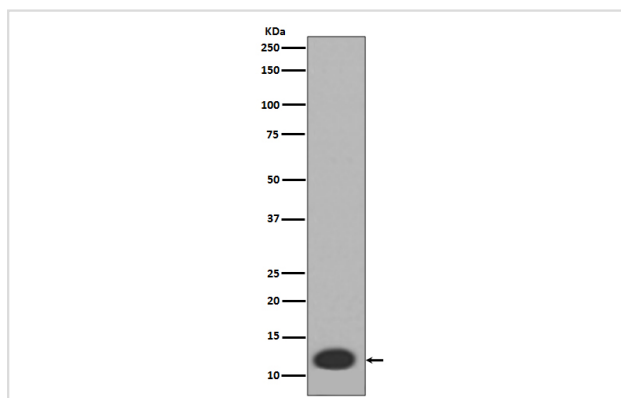
Description

Product Name	MRP8 Rabbit mAb
Host Species	Rabbit
Clonality	Monoclonal
Isotype	Rabbit IgG
Purification	Affinity-chromatography
Applications	WB IHC IP
Species Reactivity	Human Mouse
Specificity	MRP8 Antibody detects endogenous levels of total MRP8
Immunogen Description	A synthesized peptide derived from human MRP8
Other Names	60B8AG; CAGA; CFAG; CGLA; CP-10; L1Ag; MA387; MIF; MRP8; NIF; P8;
Accession No.	Uniprot:P05109
Uniprot	P05109
Calculated MW	11kDa
Formulation	Rabbit IgG in phosphate buffered saline , pH 7.4, 150mM NaCl, 0.02% sodium azide and 50% glycerol.
Storage	Store at +4 Λ C short term. Store at -20 Λ C long term. Avoid freeze / thaw cycle.

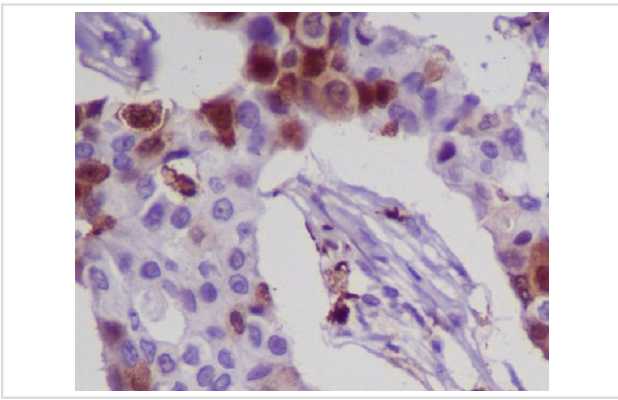
Application Details

WB:1:500~1:2000IHC:1:50~1:200IP:1:30

Images



Western blot analysis of MRP8 expression in HL-60 cell lysate.



Immunohistochemical analysis of paraffin-embedded human breast cancer, using MRP8 Antibody.

Product Description

S100 proteins are localized in the cytoplasm and/or nucleus of a wide range of cells, and involved in the regulation of a number of cellular processes such as cell cycle progression and differentiation. S100 genes include at least 13 members which are located as a cluster on chromosome 1q21. This protein may function in the inhibition of casein kinase and as a cytokine.

Note: This product is for in vitro research use only