

C Reactive Protein Rabbit mAb

Catalog No: #56060

Package Size: #56060-1 50ul #56060-2 100ul

Orders: order@signalwayantibody.com

Support: tech@signalwayantibody.com

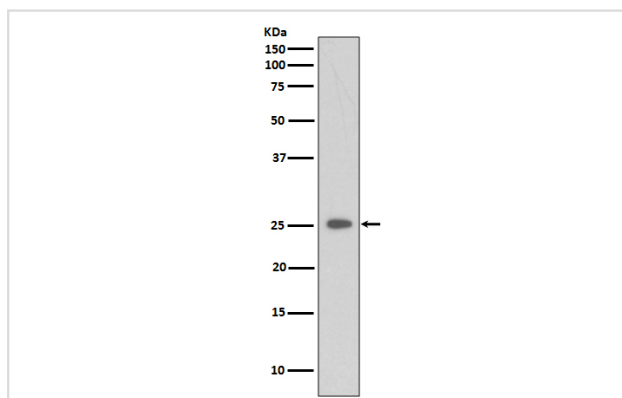
Description

Product Name	C Reactive Protein Rabbit mAb
Host Species	Rabbit
Clonality	Monoclonal
Isotype	Rabbit IgG
Purification	Affinity-chromatography
Applications	WB IHC IP
Species Reactivity	Human
Specificity	C Reactive Protein Antibody detects endogenous levels of total C Reactive Protein
Immunogen Description	A synthesized peptide derived from human C Reactive Protein
Other Names	CRP; Pentraxin 1; PTX1; C reactive protein pentraxin related;
Accession No.	Uniprot:P02741
Uniprot	P02741
Calculated MW	25kDa
Formulation	Rabbit IgG in phosphate buffered saline , pH 7.4, 150mM NaCl, 0.02% sodium azide and 50% glycerol.
Storage	Store at +4 Λ C short term. Store at -20 Λ C long term. Avoid freeze / thaw cycle.

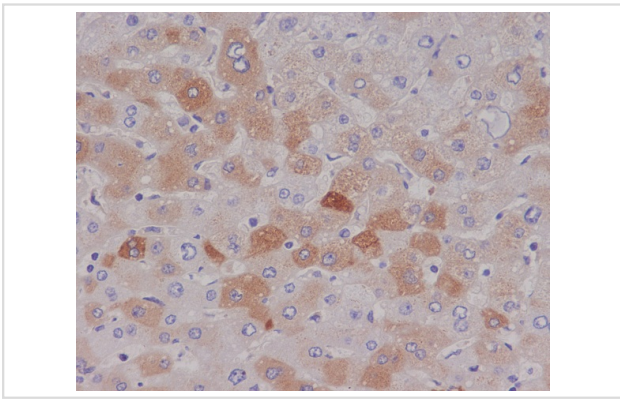
Application Details

WB:1:1000~1:2000IHC:1:500~1:1000IP:1:50

Images



Western blot analysis of CRP expression in Etoposide treated 293 whole cell lysates.



Immunohistochemical analysis of paraffin-embedded human liver, using C Reactive Protein Antibody.

Product Description

Serum CRP values are routinely measured to detect or monitor many human diseases and minor elevations of C-reactive protein are predictive of cardiovascular events in patients with coronary heart disease. CRP promotes host defense, is an efficient activator of the classical C cascade, and shown to be opsonic. The opsonic and C activation activities are responsible for the nonspecific host defense activities providing protection in the preimmune stage of acute infections.

Note: This product is for in vitro research use only