

## alpha + beta Synuclein Rabbit mAb

Catalog No: #56061

Package Size: #56061-1 50ul #56061-2 100ul

Orders: order@signalwayantibody.com

Support: tech@signalwayantibody.com

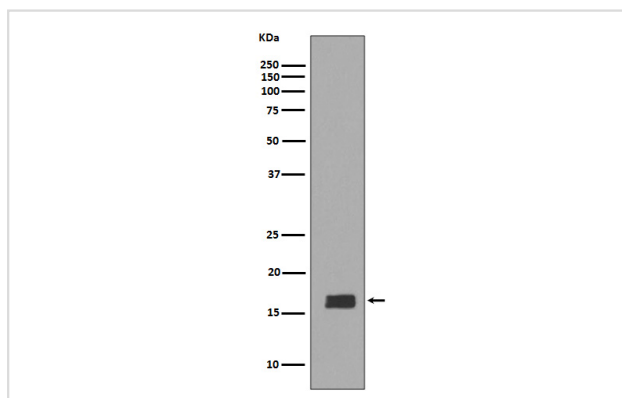
## Description

Product Name	alpha + beta Synuclein Rabbit mAb
Host Species	Rabbit
Clonality	Monoclonal
Isotype	Rabbit IgG
Purification	Affinity-chromatography
Applications	WB ICC/IF FC
Species Reactivity	Human Mouse Rat
Specificity	alpha + beta Synuclein Antibody detects endogenous levels of total alpha + beta Synuclein
Immunogen Description	A synthesized peptide derived from human alpha + beta Synuclein
Other Names	alpha synuclein; beta synuclein ; NACP; PD1 ; SNCA; SNCB;
Accession No.	Uniprot:P37840/Q16143
Uniprot	P37840/Q16143
Calculated MW	18kDa
Formulation	Rabbit IgG in phosphate buffered saline , pH 7.4, 150mM NaCl, 0.02% sodium azide and 50% glycerol.
Storage	Store at +4 $\Lambda$ C short term. Store at -20 $\Lambda$ C long term. Avoid freeze / thaw cycle.

## Application Details

WB:1:1000~1:2000IC/IF:1:50~1:200FC:1:50

## Images



Western blot analysis of alpha + beta Synuclein expression in Mouse brain tissue lysate.

## Product Description

Alpha-synuclein is a member of the synuclein family, which also includes beta- and gamma-synuclein. Synucleins are abundantly expressed in the brain and alpha- and beta-synuclein inhibit phospholipase D2 selectively.

---

Note: This product is for in vitro research use only