

## p70 S6 Kinase Rabbit mAb

Catalog No: #56062

Package Size: #56062-1 50ul #56062-2 100ul

Orders: order@signalwayantibody.com

Support: tech@signalwayantibody.com

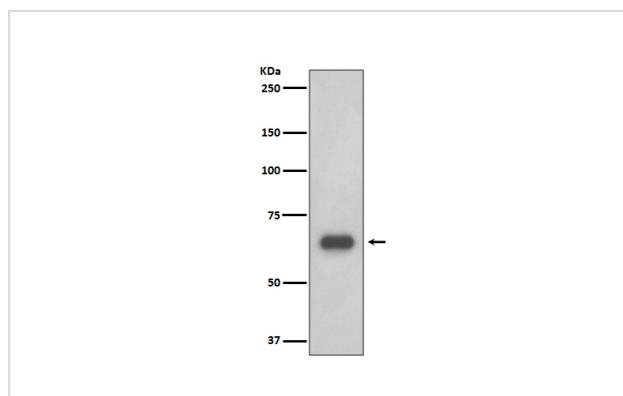
## Description

Product Name	p70 S6 Kinase Rabbit mAb
Host Species	Rabbit
Clonality	Monoclonal
Isotype	Rabbit IgG
Purification	Affinity-chromatography
Applications	WB IHC ICC/IF IP FC
Species Reactivity	Human Mouse Rat
Specificity	p70 S6 Kinase Antibody detects endogenous levels of total p70 S6 Kinase
Immunogen Description	A synthesized peptide derived from human p70 S6 Kinase
Other Names	EC 2.7.11.1; KS6B1; P70-S6K; RPS6KB1; Ribosomal protein S6 kinase, Ribosomal protein S6 kinase 70kDa polypeptide 1; S6K1; kinase p70S6K; p70-S6K;
Accession No.	Uniprot:P23443
Uniprot	P23443
Calculated MW	70kDa
Formulation	Rabbit IgG in phosphate buffered saline , pH 7.4, 150mM NaCl, 0.02% sodium azide and 50% glycerol.
Storage	Store at +4ℳ C short term. Store at -20ℳ C long term. Avoid freeze / thaw cycle.

## Application Details

WB:1:1000~1:2000IHC:1:50~1:200ICC/IF:1:100~1:500IP:1:50FC:1:100

## Images



Western blot analysis of p70 S6 Kinase expression in 293T cell lysate.

## Product Description

p70 S6 kinase is a mitogen activated Ser/Thr protein kinase that is required for cell growth and G1 cell cycle progression. Phosphorylation of Thr229 in the catalytic domain and Thr389 in the linker domain are most critical for kinase function. Phosphorylation of Thr389, however, most closely correlates with p70 kinase activity in vivo. Prior phosphorylation of Thr389 is required for the action of phosphoinositide 3-dependent protein kinase 1 (PDK1) on

Thr229.

---

Note: This product is for in vitro research use only