

Somatostatin Receptor 2 Rabbit mAb

Catalog No: #56064

Package Size: #56064-1 50ul #56064-2 100ul

Orders: order@signalwayantibody.comSupport: tech@signalwayantibody.com

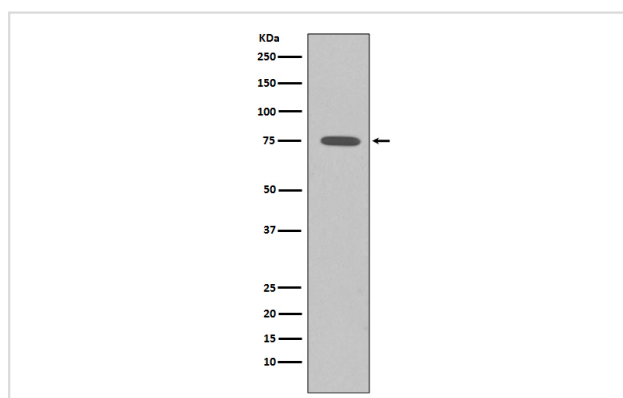
Description

Product Name	Somatostatin Receptor 2 Rabbit mAb
Host Species	Rabbit
Clonality	Monoclonal
Isotype	Rabbit IgG
Purification	Affinity-chromatography
Applications	WB IHC IP
Species Reactivity	Human Mouse Rat
Specificity	Somatostatin Receptor 2 Antibody detects endogenous levels of total Somatostatin Receptor 2
Immunogen Description	A synthesized peptide derived from human Somatostatin Receptor 2
Other Names	SSTR2; somatostatin receptor 2; SS 2 R; SS2R; SRIF 1; SS2 R;
Accession No.	Uniprot:P30874
Uniprot	P30874
Calculated MW	41kDa
Formulation	Rabbit IgG in phosphate buffered saline , pH 7.4, 150mM NaCl, 0.02% sodium azide and 50% glycerol.
Storage	Store at +4 Λ C short term. Store at -20 Λ C long term. Avoid freeze / thaw cycle.

Application Details

WB:1:1000~1:2000IHC:1:50~1:200IP:1:50

Images



Western blot analysis of SSTR2 expression in K562 cell lysates.

Product Description

Somatostatin acts at many sites to inhibit the release of many hormones and other secretory proteins. The biologic effects of somatostatin are probably mediated by a family of G protein-coupled receptors that are expressed in a tissue-specific manner. SSTR2 is a member of the superfamily of receptors having seven transmembrane segments and is expressed in highest levels in cerebrum and kidney.

Note: This product is for in vitro research use only