

Cytokeratin 8 Rabbit mAb

Catalog No: #56065

Package Size: #56065-1 50ul #56065-2 100ul

Orders: order@signalwayantibody.com

Support: tech@signalwayantibody.com

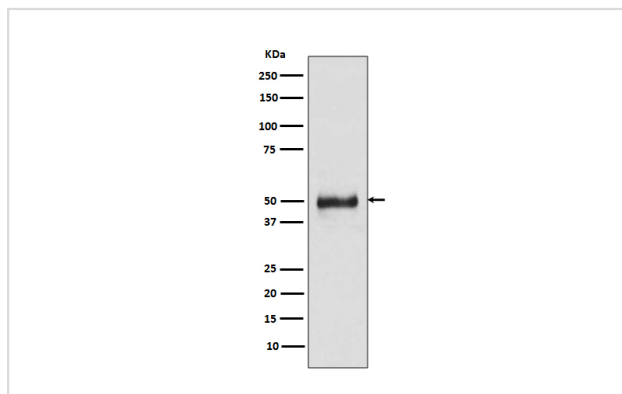
Description

Product Name	Cytokeratin 8 Rabbit mAb
Host Species	Rabbit
Clonality	Monoclonal
Isotype	Rabbit IgG
Purification	Affinity-chromatography
Applications	WB IHC ICC/IF IP FC
Species Reactivity	Human Mouse
Specificity	Cytokeratin 8 Antibody detects endogenous levels of total Cytokeratin 8
Immunogen Description	A synthesized peptide derived from human Cytokeratin 8
Other Names	CARD2; CK-8; CK8; CYK8; cytokeratin 8; Cytokeratin-8; K2C8; K8; keratin 8; Keratin, type II cytoskeletal 8; Keratin-8; KO; KRT8; Type-II keratin Kb8;
Accession No.	Uniprot:P05787
Uniprot	P05787
Calculated MW	53kDa
Formulation	Rabbit IgG in phosphate buffered saline , pH 7.4, 150mM NaCl, 0.02% sodium azide and 50% glycerol.
Storage	Store at +4 Λ C short term. Store at -20 Λ C long term. Avoid freeze / thaw cycle.

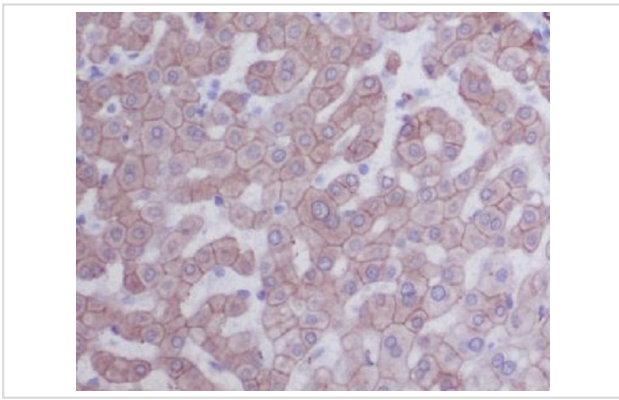
Application Details

WB:1:10000~1:20000IHC:1:50~1:200ICC/IF:1:50~1:200IP:1:50FC:1:50

Images



Western blot analysis of Cytokeratin 8 expression in HaCaT cell lysate.



Immunohistochemical analysis of paraffin-embedded human liver, using Cytokeratin 8 Antibody.

Product Description

Together with KRT19, helps to link the contractile apparatus to dystrophin at the costameres of striated muscle. K8 a type II cytoskeletal keratin. The keratins are intermediate filament proteins responsible for the structural integrity of epithelial cells and are subdivided into cytokeratins and hair keratins.

Note: This product is for in vitro research use only