

## beta II Tubulin Rabbit mAb

Catalog No: #56067

Package Size: #56067-1 50ul #56067-2 100ul

Orders: order@signalwayantibody.com

Support: tech@signalwayantibody.com

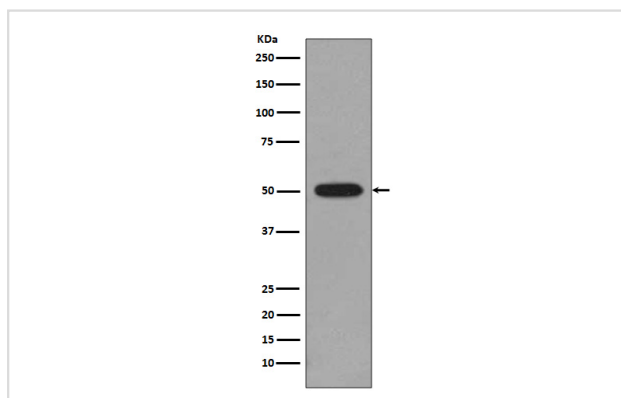
## Description

Product Name	beta II Tubulin Rabbit mAb
Host Species	Rabbit
Clonality	Monoclonal
Isotype	Rabbit IgG
Purification	Affinity-chromatography
Applications	WB IHC ICC/IF IP FC
Species Reactivity	Human Mouse Rat
Specificity	beta II Tubulin Antibody detects endogenous levels of total beta II Tubulin
Immunogen Description	A synthesized peptide derived from human beta II Tubulin
Other Names	class II beta tubulin isotype; Beta2; Tubulin beta 2 chain; TUBB; TUBB2;
Accession No.	Uniprot:P68371/Q13885/Q9BVA1
Uniprot	P68371/Q13885/Q9BVA1
Calculated MW	50kDa
Formulation	Rabbit IgG in phosphate buffered saline , pH 7.4, 150mM NaCl, 0.02% sodium azide and 50% glycerol.
Storage	Store at +4Λ C short term. Store at -20Λ C long term. Avoid freeze / thaw cycle.

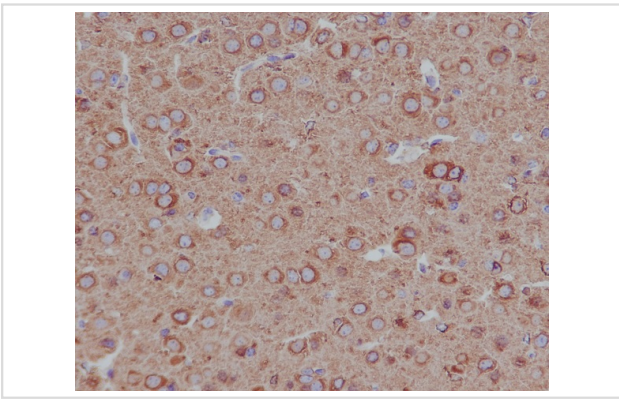
## Application Details

WB:1:1000~1:2000IHC:1:50~1:200ICC/IF:1:50~1:200IP:1:50

## Images



Western blot analysis of beta II Tubulin expression in C6 cell lysate.



Immunohistochemical analysis of paraffin-embedded mouse brain, using beta II Tubulin Antibody.

## Product Description

Tubulin is the major constituent of microtubules. It binds two moles of GTP, one at an exchangeable site on the beta chain and one at a non-exchangeable site on the alpha chain.

Note: This product is for in vitro research use only