

## Ras Rabbit mAb

Catalog No: #56070

Package Size: #56070-1 50ul #56070-2 100ul

Orders: order@signalwayantibody.com

Support: tech@signalwayantibody.com

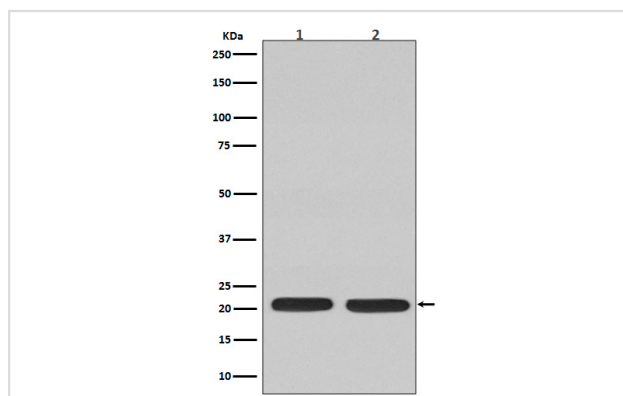
## Description

Product Name	Ras Rabbit mAb
Host Species	Rabbit
Clonality	Monoclonal
Isotype	Rabbit IgG
Purification	Affinity-chromatography
Applications	WB IP FC
Species Reactivity	Human Mouse Rat
Specificity	Ras Antibody detects endogenous levels of total Ras
Immunogen Description	A synthesized peptide derived from human Ras
Other Names	GTPase HRas;GTPase KRas;GTPase NRas;H-Ras-1;HAMS;HRAS;HRAS1;K-RAS;N-RAS;NRAS;p21ras;RASH1;RASK2;Transforming protein p21
Accession No.	Uniprot:P01111
Uniprot	P01111
Calculated MW	18kDa
Formulation	Rabbit IgG in phosphate buffered saline , pH 7.4, 150mM NaCl, 0.02% sodium azide and 50% glycerol.
Storage	Store at +4 $^{\circ}$ C short term. Store at -20 $^{\circ}$ C long term. Avoid freeze / thaw cycle.

## Application Details

WB:1:10000~1:20000IP:1:20FC:1:50

## Images



Western blot analysis of Ras expression in (1) C6 cell lysate;  
(2) Jurkat cell lysate.

## Product Description

HRas a small GTPase protein of the Ras family. Alternates between an inactive form bound to GDP and an active form bound to GTP. Activated by a guanine nucleotide-exchange factor (GEF) and inactivated by a GTPase-activating protein (GAP). Mutations are implicated in a variety of human tumors.

---

Note: This product is for in vitro research use only