

## IGF1 Rabbit mAb

Catalog No: #56071

Package Size: #56071-1 50ul #56071-2 100ul

Orders: order@signalwayantibody.com

Support: tech@signalwayantibody.com

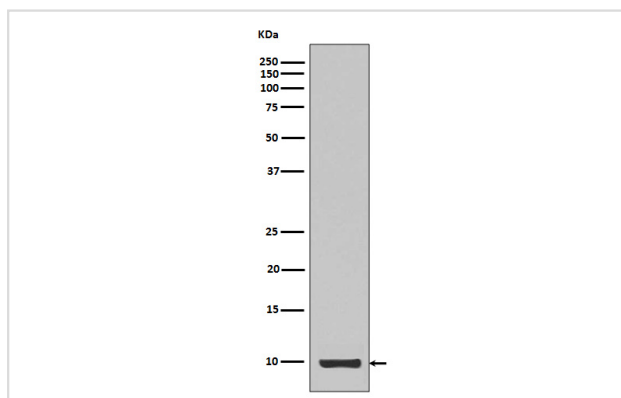
## Description

Product Name	IGF1 Rabbit mAb
Host Species	Rabbit
Clonality	Monoclonal
Isotype	Rabbit IgG
Purification	Affinity-chromatography
Applications	WB
Species Reactivity	recombinant protein
Specificity	IGF1 Antibody detects endogenous levels of total IGF1
Immunogen Description	A synthesized peptide derived from human IGF1
Other Names	IGF1;IGF1A;IGFI; MGF; Somatomedin C; Insulin like growth factor 1;
Accession No.	Uniprot:P05019
Uniprot	P05019
Calculated MW	10kDa
Formulation	Rabbit IgG in phosphate buffered saline , pH 7.4, 150mM NaCl, 0.02% sodium azide and 50% glycerol.
Storage	Store at +4 $\Lambda$ C short term. Store at -20 $\Lambda$ C long term. Avoid freeze / thaw cycle.

## Application Details

WB: 1:500~1:2000

## Images



Western blot analysis of Calreticulin expression in IGF1 recombinant protein.

## Product Description

IGF1, also named as IBP1, MGF, IGF-IA and Somatomedin-C, belongs to the insulin family. IGF1 is structurally and functionally related to insulin but have a much higher growth-promoting activity. Altered expression or mutation of IGF-1 is associated with several human disorders, including type I diabetes and various forms of cancer.

---

Note: This product is for in vitro research use only