

Brd4 Rabbit mAb

Catalog No: #56072

Package Size: #56072-1 50ul #56072-2 100ul

Orders: order@signalwayantibody.com

Support: tech@signalwayantibody.com

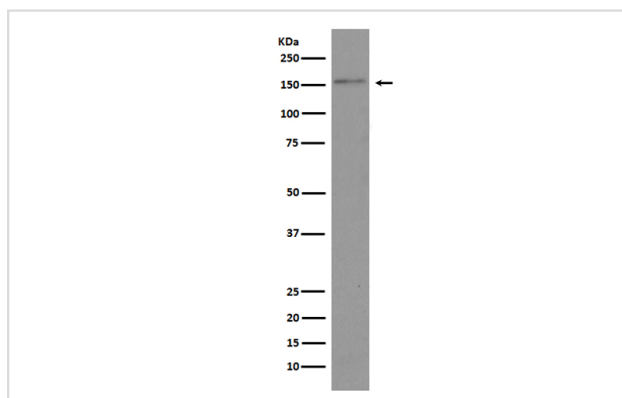
Description

Product Name	Brd4 Rabbit mAb
Host Species	Rabbit
Clonality	Monoclonal
Isotype	Rabbit IgG
Purification	Affinity-chromatography
Applications	WB IHC ICC/IF IP
Species Reactivity	Human Mouse Rat
Specificity	Brd4 Antibody detects endogenous levels of total Brd4
Immunogen Description	A synthesized peptide derived from human Brd4
Other Names	Brd4; CAP; HUNK1; MCAP; Bromodomain containing 4; chromosome associated protein;
Accession No.	Uniprot:O60885
Uniprot	O60885
Calculated MW	152kDa
Formulation	Rabbit IgG in phosphate buffered saline , pH 7.4, 150mM NaCl, 0.02% sodium azide and 50% glycerol.
Storage	Store at +4Λ C short term. Store at -20Λ C long term. Avoid freeze / thaw cycle.

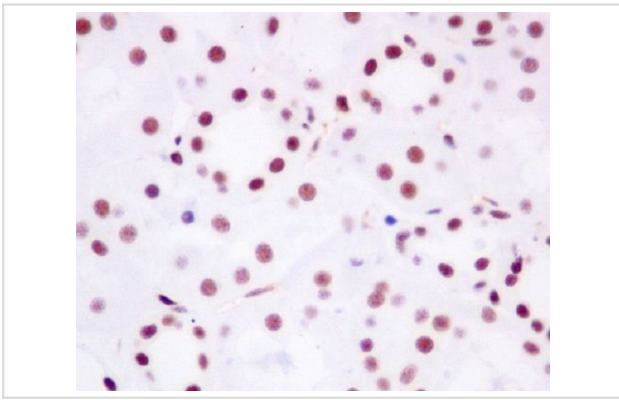
Application Details

WB:1:500~1:2000IHC:1:50~1:200ICC/IF:1:50~1:200IP:1:50

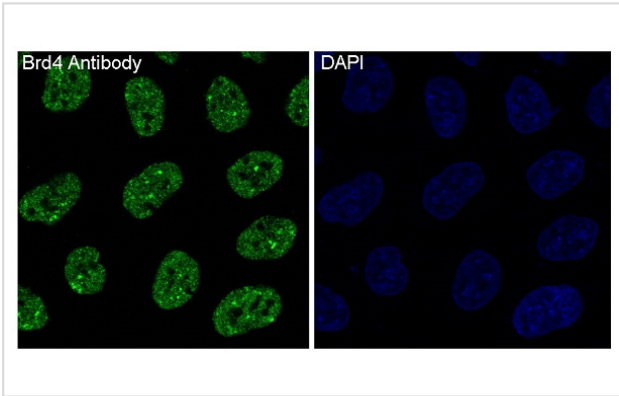
Images



Western blot analysis of Brd4 expression in HeLa cell lysate.



Immunohistochemical analysis of paraffin-embedded human kidney, using Brd4 Antibody.



Immunofluorescent analysis of HeLa cells, using Brd4 Antibody

Product Description

Bromodomain-containing protein 4 (BRD4) is a member of the bromodomains and extra terminal (BET) family of proteins, which also includes BRD2, BRD3, and BRDT. BET family proteins contain two tandem bromodomains and an extra terminal (ET) domain, and bind acetyl lysine residues. BRD4 is a chromatin-binding protein with a preference for Lys14 on histone H3 as well as Lys5 and Lys12 on histone H4. BRD4 chromatin binding occurs throughout the cell cycle, including condensed mitotic chromosomes, when the majority of genes are silenced.

Note: This product is for in vitro research use only