

PUMA Rabbit mAb

Catalog No: #56073

Package Size: #56073-1 50ul #56073-2 100ul

Orders: order@signalwayantibody.com

Support: tech@signalwayantibody.com

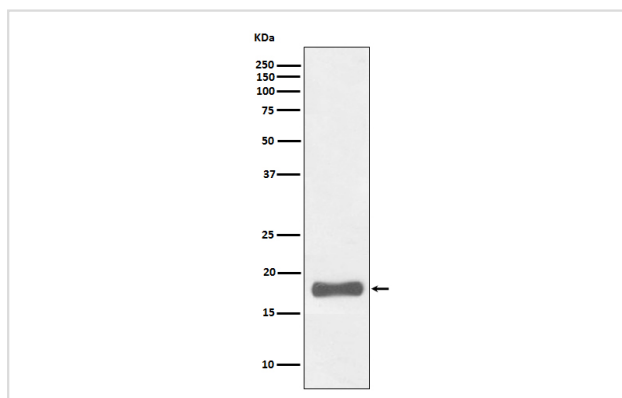
Description

Product Name	PUMA Rabbit mAb
Host Species	Rabbit
Clonality	Monoclonal
Isotype	Rabbit IgG
Purification	Affinity-chromatography
Applications	WB IHC ICC/IF FC
Species Reactivity	Human Mouse Rat
Specificity	PUMA Antibody detects endogenous levels of total PUMA
Immunogen Description	A synthesized peptide derived from human PUMA
Other Names	BBC3; bcl2 binding component 3; jfy1; puma; p53 up-regulated modulator of apoptosis; PUMA alpha;
Accession No.	Uniprot:Q9BXH1
Uniprot	Q9BXH1
Calculated MW	18kDa
Formulation	Rabbit IgG in phosphate buffered saline , pH 7.4, 150mM NaCl, 0.02% sodium azide and 50% glycerol.
Storage	Store at +4 Λ C short term. Store at -20 Λ C long term. Avoid freeze / thaw cycle.

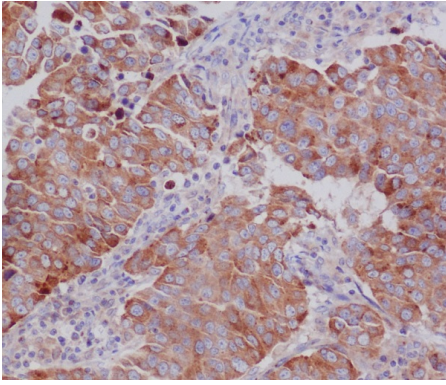
Application Details

WB:1:500~1:2000IHC:1:50~1:200ICC/IF:1:50~1:200FC:1:50

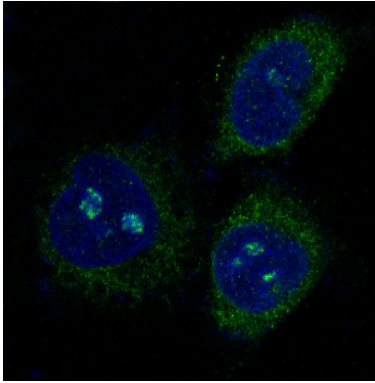
Images



Western blot analysis of PUMA expression in K562 cell lysate.



Immunohistochemical analysis of paraffin-embedded human breast cancer, using PUMA Antibody.



Immunofluorescent analysis of HeLa cells, using PUMA Antibody .

Product Description

Essential mediator of p53/TP53-dependent and p53/TP53-independent apoptosis. Functions by promoting partial unfolding of BCL2L1 and dissociation of BCL2L1 from p53/TP53. Regulates ER stress-induced neuronal apoptosis.

Note: This product is for in vitro research use only