

ERK1/2 Rabbit mAb

Catalog No: #56077

Package Size: #56077-1 50ul #56077-2 100ul

Orders: order@signalwayantibody.com

Support: tech@signalwayantibody.com

Description

Product Name	ERK1/2 Rabbit mAb
Host Species	Rabbit
Clonality	Monoclonal
Isotype	Rabbit IgG
Purification	Affinity-chromatography
Applications	WB ICC/IF IP FC
Species Reactivity	Human Mouse Rat
Specificity	ERK1/2 Antibody detects endogenous levels of total ERK1/2
Immunogen Description	A synthesized peptide derived from human ERK1/2
Other Names	ERK-1, Insulin-stimulated MAP2 kinase, MAP kinase 1, MAPK 1, p44-ERK1, ERT2, p44-MAPK, ERK-1,
Accession No.	Uniprot:P27361/P28482
Uniprot	P27361/P28482
Calculated MW	42,44kDa
Formulation	Rabbit IgG in phosphate buffered saline , pH 7.4, 150mM NaCl, 0.02% sodium azide and 50% glycerol.
Storage	Store at +4Λ C short term. Store at -20Λ C long term. Avoid freeze / thaw cycle.

Application Details

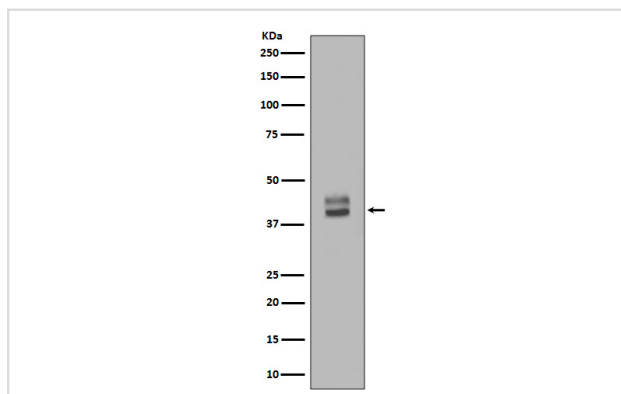
WB: 1:500~1:2000

ICC/IF: 1:50~1:200

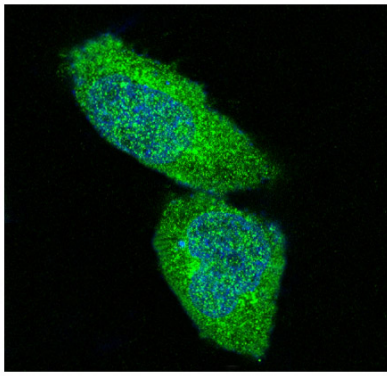
IP: 1:50

FC: 1:200

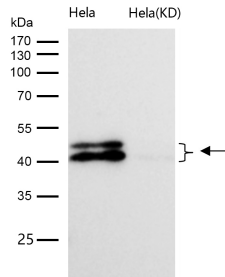
Images



Western blot analysis of ERK1/2 Antibody expression in HepG2 whole cell lysates.



Immunofluorescent analysis of HeLa cells, using ERK1/2 Antibody.



All lanes use the Antibody at 1:1K dilution for 1 hour at room temperature.

Product Description

ERK1 p42 MAP kinase plays a critical role in the regulation of cell growth and differentiation. Activated by a wide variety of extracellular signals including growth and neurotrophic factors, cytokines, hormones and neurotransmitters. ERK2 p44 MAP kinase plays a critical role in the regulation of cell growth and differentiation. Acts as an integration point for multiple biochemical signals, and is involved in a wide variety of cellular processes such as proliferation, differentiation, transcription regulation and development.

Note: This product is for in vitro research use only