

Caspase-2 Rabbit mAb

Catalog No: #56079

Package Size: #56079-1 50ul #56079-2 100ul

Orders: order@signalwayantibody.com

Support: tech@signalwayantibody.com

Description

Product Name	Caspase-2 Rabbit mAb
Host Species	Rabbit
Clonality	Monoclonal
Isotype	Rabbit IgG
Purification	Affinity-chromatography
Applications	WB IHC ICC/IF FC
Species Reactivity	Human Mouse Rat
Specificity	Caspase-2 Antibody detects endogenous levels of total Caspase-2
Immunogen Description	A synthesized peptide derived from human Caspase-2
Other Names	Caspase-2; Caspase 2; Caspase2; CASP-2; Neural precursor cell expressed developmentally down-regulated protein 2; NEDD-2; Protease ICH-1; CASP2; ICH1; NEDD2
Accession No.	Uniprot:P42575
Uniprot	P42575
Calculated MW	48,30,12kDa
Formulation	Rabbit IgG in phosphate buffered saline , pH 7.4, 150mM NaCl, 0.02% sodium azide and 50% glycerol.
Storage	Store at +4Λ C short term. Store at -20Λ C long term. Avoid freeze / thaw cycle.

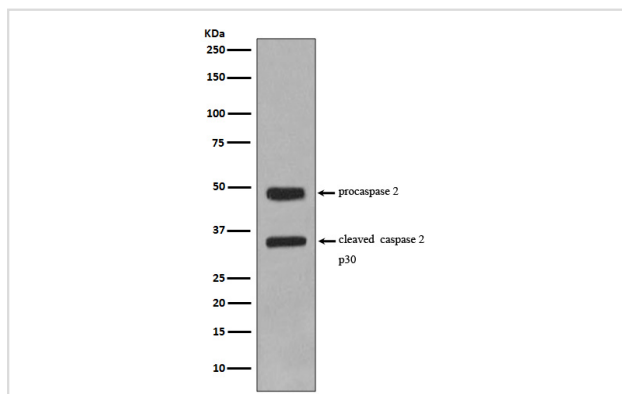
Application Details

WB:1:500~2000

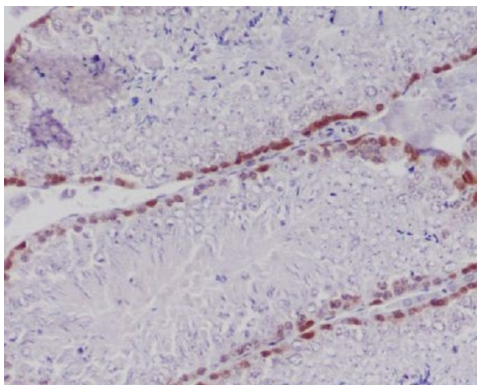
IHC:50~200

ICC/IF:50~200

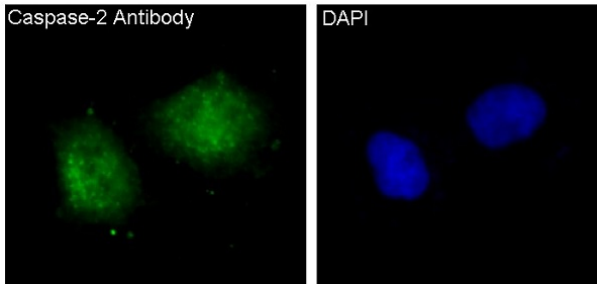
Images



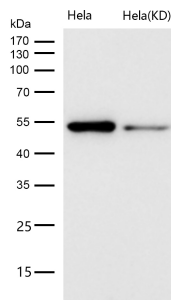
Western blot analysis of Caspase-2 expression in Jurkat cell lysate.



Immunohistochemical analysis of paraffin-embedded mouse testis, using Caspase-2 Antibody.



Immunofluorescent analysis of HeLa cells, using Caspase-2 Antibody.



All lanes use the Antibody at 1:1K dilution for 1 hour at room temperature.

Product Description

Caspase-2 (Nedd2, ICH-1) is an aspartate-specific cysteine protease that is activated in response to various apoptotic stimuli. Caspase-2 is unique among the caspases in that it has features of both upstream caspases (long prodomain) and downstream caspases (DEXD substrate specificity). Caspase-2 is highly expressed in the brain during development and is expressed at low levels in adult tissue.

Note: This product is for in vitro research use only