

KDM1/LSD1 Rabbit mAb

Catalog No: #56086

Package Size: #56086-1 50ul #56086-2 100ul

Orders: order@signalwayantibody.com

Support: tech@signalwayantibody.com

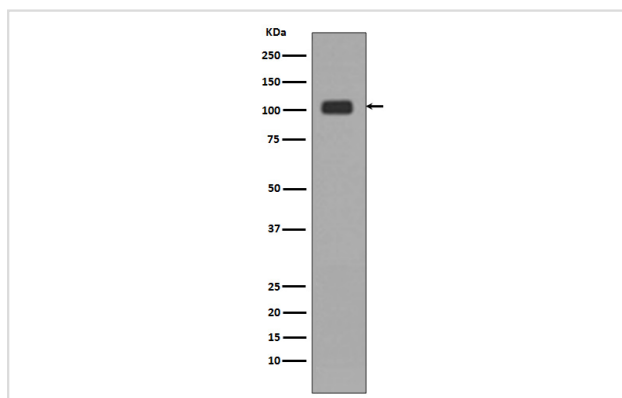
Description

Product Name	KDM1/LSD1 Rabbit mAb
Host Species	Rabbit
Clonality	Monoclonal
Isotype	Rabbit IgG
Purification	Affinity-chromatography
Applications	WB IHC ICC/IF IP
Species Reactivity	Human Mouse Rat
Specificity	KDM1 / LSD1 Antibody detects endogenous levels of total KDM1 / LSD1
Immunogen Description	A synthesized peptide derived from human KDM1 / LSD1
Other Names	KDM1;AOF2;BHC110;KIAA0601;LSD1; KDM1A;
Accession No.	Uniprot:O60341
Uniprot	O60341
Calculated MW	110kDa
Formulation	Rabbit IgG in phosphate buffered saline , pH 7.4, 150mM NaCl, 0.02% sodium azide and 50% glycerol.
Storage	Store at +4 Λ C short term. Store at -20 Λ C long term. Avoid freeze / thaw cycle.

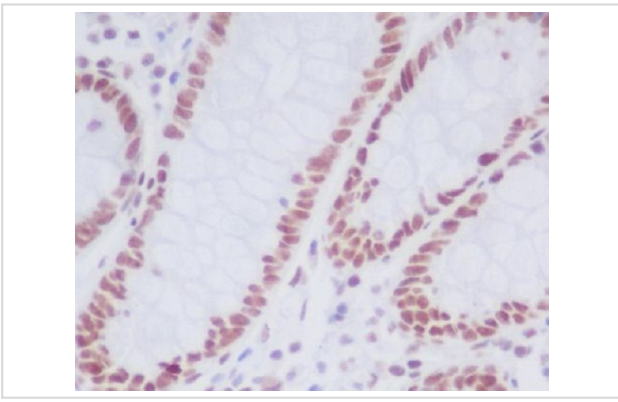
Application Details

WB:1:1000~1:2000IHC:1:50~1:200ICC/IF:1:50~1:200IP:1:30

Images



Western blot analysis of KDM1/LSD1 expression in HeLa cell lysate



Immunohistochemical analysis of paraffin-embedded human colon, using KDM1/LSD1 Antibody.

Product Description

Histone demethylase that demethylates both 'Lys-4' (H3K4me) and 'Lys-9' (H3K9me) of histone H3, thereby acting as a coactivator or a corepressor, depending on the context. Acts by oxidizing the substrate by FAD to generate the corresponding imine that is subsequently hydrolyzed. Acts as a corepressor by mediating demethylation of H3K4me, a specific tag for epigenetic transcriptional activation. Demethylates both mono- (H3K4me1) and di-methylated (H3K4me2) H3K4me. May play a role in the repression of neuronal genes.

Note: This product is for in vitro research use only