

Lin28B Rabbit mAb

Catalog No: #56087

Package Size: #56087-1 50ul #56087-2 100ul

Orders: order@signalwayantibody.com

Support: tech@signalwayantibody.com

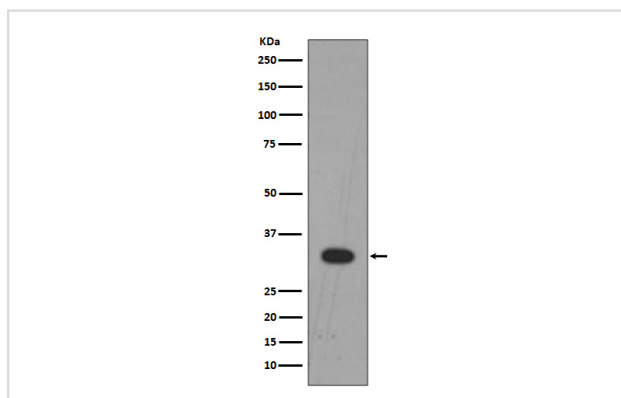
Description

Product Name	Lin28B Rabbit mAb
Host Species	Rabbit
Clonality	Monoclonal
Isotype	Rabbit IgG
Purification	Affinity-chromatography
Applications	WB ICC/IF IP FC
Species Reactivity	Human
Specificity	Lin28B Antibody detects endogenous levels of total Lin28B
Immunogen Description	A synthesized peptide derived from human Lin28B
Other Names	CSDD2; FLJ16517; LIN28B; Protein lin-28 homolog B;
Accession No.	Uniprot:Q6ZN17
Uniprot	Q6ZN17
Calculated MW	30kDa
Formulation	Rabbit IgG in phosphate buffered saline , pH 7.4, 150mM NaCl, 0.02% sodium azide and 50% glycerol.
Storage	Store at +4 Λ C short term. Store at -20 Λ C long term. Avoid freeze / thaw cycle.

Application Details

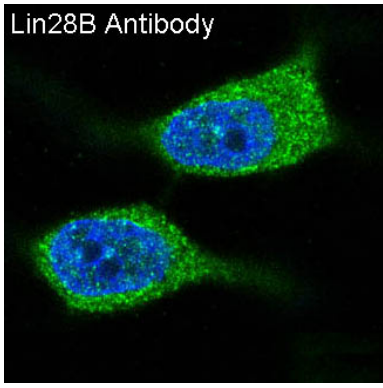
WB:1:500~1:2000IC/IF:1:100~1:500IP:1:50FC:1:100

Images



Western blot analysis of Lin28B expression in K562 cell lysate.

Lin28B Antibody



Immunofluorescent analysis of MCF-7 cells, using Lin28B Antibody .

Product Description

It has recently been shown that upregulation of LIN28A and LIN28B in primary human tumors and human cancer cell lines is correlated with downregulation of let-7 miRNAs. LIN28 genes are reported to be involved in primordial germ cell development and germ cell malignancy. In addition, allelic variation in LIN28B is associated with regulating the timing of puberty in humans.

Note: This product is for in vitro research use only