

## p62/SQSTM1 Rabbit mAb

Catalog No: #56089

Package Size: #56089-1 50ul #56089-2 100ul

Orders: order@signalwayantibody.com

Support: tech@signalwayantibody.com

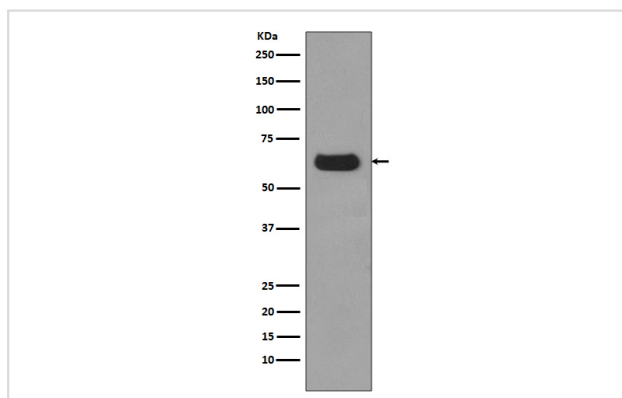
## Description

Product Name	p62/SQSTM1 Rabbit mAb
Host Species	Rabbit
Clonality	Monoclonal
Isotype	Rabbit IgG
Purification	Affinity-chromatography
Applications	WB ICC/IF FC
Species Reactivity	Human Mouse Rat
Specificity	p62/SQSTM1 Antibody detects endogenous levels of total p62/SQSTM1
Immunogen Description	A synthesized peptide derived from human p62/SQSTM1
Other Names	OSIL; Oxidative stress induced like; p60; p62; p62B; Paget disease of bone 3;PDB 3; PDB3;
Accession No.	Uniprot:Q13501
Uniprot	Q13501
Calculated MW	62kDa
Formulation	Rabbit IgG in phosphate buffered saline , pH 7.4, 150mM NaCl, 0.02% sodium azide and 50% glycerol.
Storage	Store at +4 $\Lambda$ C short term. Store at -20 $\Lambda$ C long term. Avoid freeze / thaw cycle.

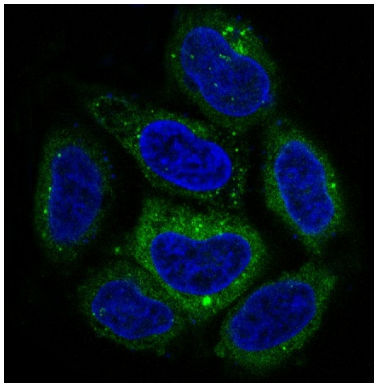
## Application Details

WB:1:5000~1:10000IC/IF:1:50~1:200FC:1:50

## Images



Western blot analysis of p62/SQSTM1 expression in SKBR-3 cell lysate.



Immunofluorescent analysis of HeLa cells, using p62/SQSTM1 Antibody.

## Product Description

Autophagy receptor that interacts directly with both the cargo to become degraded and an autophagy modifier of the MAP1 LC3 family. Required both for the formation and autophagic degradation of polyubiquitin-containing bodies, called ALIS (aggresome-like induced structures) and links ALIS to the autophagic machinery. Involved in midbody ring degradation. May regulate the activation of NF $\kappa$ B1 by TNF-alpha, nerve growth factor (NGF) and interleukin-1.

Note: This product is for in vitro research use only