

Hsp90 Rabbit mAb

Catalog No: #56090

Package Size: #56090-1 50ul #56090-2 100ul

Orders: order@signalwayantibody.com

Support: tech@signalwayantibody.com

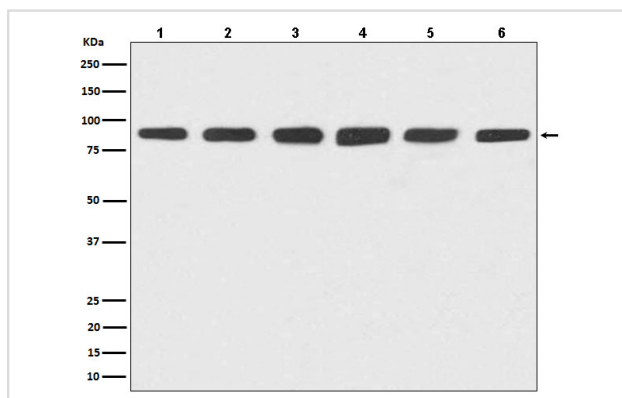
Description

Product Name	Hsp90 Rabbit mAb
Host Species	Rabbit
Clonality	Monoclonal
Isotype	Rabbit IgG
Purification	Affinity-chromatography
Applications	WB IHC ICC/IF IP FC
Species Reactivity	Human Mouse Rat
Specificity	Hsp90 Antibody detects endogenous levels of total Hsp90
Immunogen Description	A synthesized peptide derived from human Hsp90
Other Names	HSP 90; HSP90A; HSP90B; LAP-2; HSPC1; HSPC2;
Accession No.	Uniprot:P07900/P08238
Uniprot	P07900/P08238
Calculated MW	90kDa
Formulation	Rabbit IgG in phosphate buffered saline , pH 7.4, 150mM NaCl, 0.02% sodium azide and 50% glycerol.
Storage	Store at +4 Λ C short term. Store at -20 Λ C long term. Avoid freeze / thaw cycle.

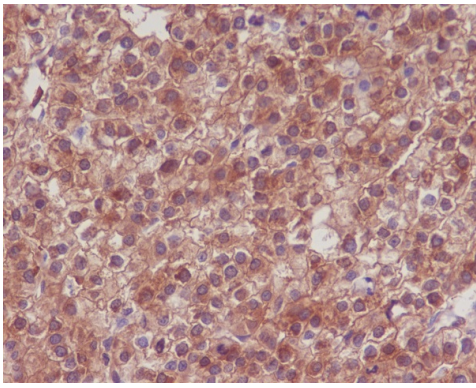
Application Details

WB:1:5000~1:10000IHC:1:50~1:200ICC/IF:1:50~1:200IP:1:50FC:1:100

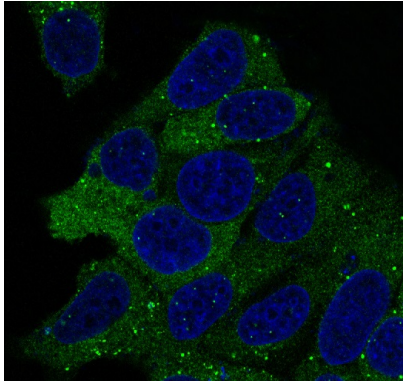
Images



Western blot analysis of Hsp90 expression in (1) HeLa cell lysate; (2) Jurkat cell lysate; (3) RAW264.7 cell lysate; (4) NIH/3T3 cell lysate; (5) PC-12 cell lysate; (6) C6 cell lysate.



Immunohistochemical analysis of paraffin-embedded human liver carcinoma, using Hsp90 Antibody .



Immunofluorescent analysis of HeLa cells, using Hsp90 Antibody.

Product Description

Molecular chaperone that promotes the maturation, structural maintenance and proper regulation of specific target proteins involved for instance in cell cycle control and signal transduction. Undergoes a functional cycle that is linked to its ATPase activity. This cycle probably induces conformational changes in the client proteins, thereby causing their activation.

Note: This product is for in vitro research use only