

KRAS+HRAS+NRAS Rabbit mAb

Catalog No: #56091

Package Size: #56091-1 50ul #56091-2 100ul

Orders: order@signalwayantibody.com

Support: tech@signalwayantibody.com

Description

Product Name	KRAS+HRAS+NRAS Rabbit mAb
Host Species	Rabbit
Clonality	Monoclonal
Clone No.	11C12
Isotype	Rabbit IgG
Purification	Affinity-chromatography
Applications	WB ICC/IF IP FC
Species Reactivity	Human Mouse Rat
Specificity	KRAS+HRAS+NRAS Antibody detects endogenous levels of total KRAS+HRAS+NRAS
Immunogen Description	A synthesized peptide derived from human KRAS+HRAS+NRAS
Target Name	HRAS1/HRAS/KRAS
Other Names	GTPase NRas; Transforming protein N-Ras; NRAS; HRAS1; GTPase HRas; H-Ras-1; Ha-Ras; Transforming protein p21; c-H-ras; p21ras; HRAS; HRAS1; GTPase KRas; K-Ras 2; Ki-Ras; c-K-ras; c-Ki-ras; KRAS; KRAS2; RASK2;
Accession No.	Uniprot:P01111/P01112/P01116
Uniprot	P01111/P01112/P01116
Calculated MW	21kDa
Formulation	Rabbit IgG in phosphate buffered saline , pH 7.4, 150mM NaCl, 0.02% sodium azide and 50% glycerol.
Storage	Store at +4 Λ C short term. Store at -20 Λ C long term. Avoid freeze / thaw cycle.

Application Details

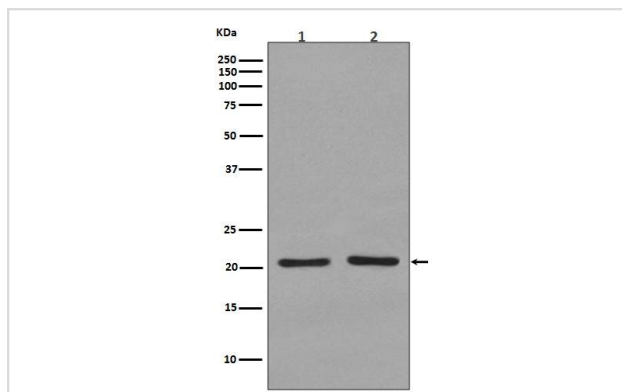
WB:1:500~1:2000

ICC/IF:1:50~1:200

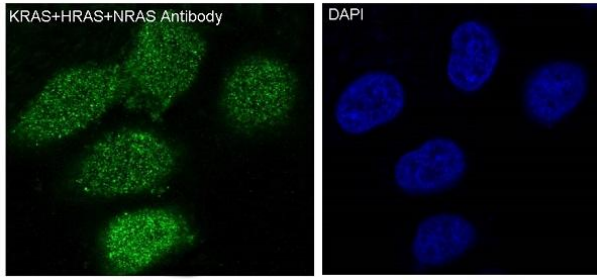
IP:1:50

FC:1:200

Images



All Lanes: KRAS+HRAS+NRAS Antibody at 1/ 1000 dilution.Lane1:293T cell lysate.Lane2:C6 cell lysate.(Proteins at 20ug per lane)Secondary: Goat Anti-Rabbit IgG(HRP) at 1/20000 dilutionPredicted band size : 21kDaObserved band size: 21kDa



Immunofluorescent analysis of HeLa cells, using KRAS+HRAS+NRAS Antibody. 4% polyformaldehyde fixed. 0.1% tritonX-100 permeable. DAPI stains the nucleus.

Product Description

HRas is a small GTPase protein of the Ras family. Alternates between an inactive form bound to GDP and an active form bound to GTP. Activated by a guanine nucleotide-exchange factor (GEF) and inactivated by a GTPase-activating protein (GAP). Mutations are implicated in a variety of human tumors.

Note: This product is for in vitro research use only