

Akt(pan) 1/2/3 Rabbit mAb

Catalog No: #56093

Package Size: #56093-1 50ul #56093-2 100ul

Orders: order@signalwayantibody.com

Support: tech@signalwayantibody.com

Description

Product Name	Akt(pan) 1/2/3 Rabbit mAb
Host Species	Rabbit
Clonality	Monoclonal
Isotype	Rabbit IgG
Purification	Affinity-chromatography
Applications	WB IHC ICC/IF IP FC
Species Reactivity	Human Mouse Rat
Specificity	Akt(pan)1/2/3 Antibody detects endogenous levels of total AKT1/2/3
Immunogen Description	A synthesized peptide derived from human AKT1/2/3
Other Names	PKB;RAC;PRKBA;PKB-ALPHA;RAC-ALPHA; AKT1 ; AKT2; AKT3; Akt1/2/3; pan Akt;
Accession No.	Uniprot:P31749/P31751/Q9Y243
Uniprot	P31749/P31751/Q9Y243
Calculated MW	56kDa
Formulation	Rabbit IgG in phosphate buffered saline , pH 7.4, 150mM NaCl, 0.02% sodium azide and 50% glycerol.
Storage	Store at +4°C short term. Store at -20°C long term. Avoid freeze / thaw cycle.

Application Details

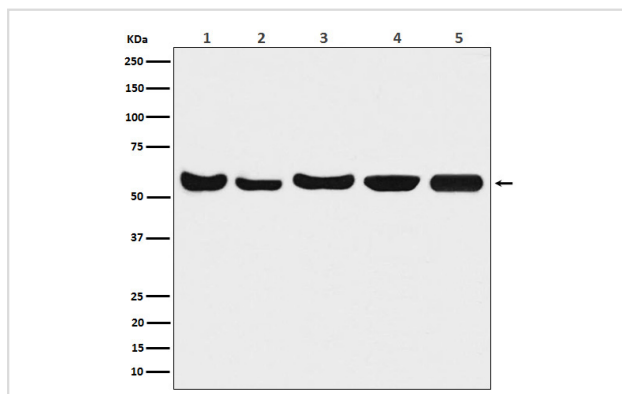
WB: 1:500~1:2000

IHC: 1:50~1:200

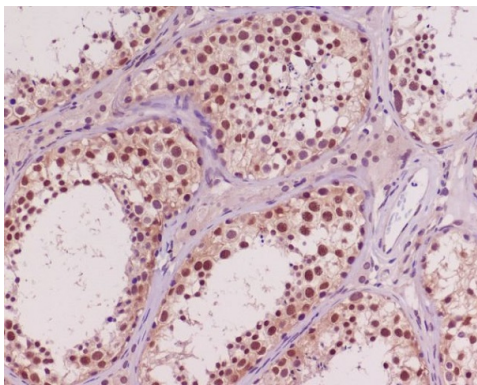
ICC/IF: 1:50~1:200

IP: 1:50

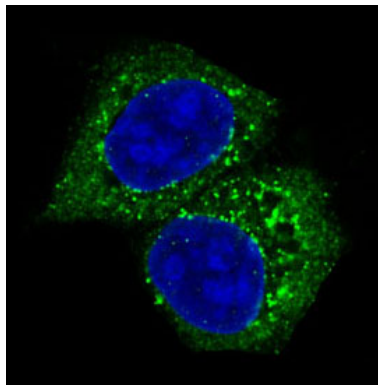
Images



Western blot analysis of Akt(pan)1/2/3 expression in (1) A549 cell lysate; (2) Mouse brain lysate; (3) Rat brain lysate; (4) Rat heart lysate; (5) Rat kidney lysate.



Immunohistochemical analysis of paraffin-embedded human testis, using Akt(pan)1/2/3 Antibody.



Immunofluorescent analysis of MCF-7 cells, using Akt(pan)1/2/3 Antibody.

Product Description

Akt, also referred to as PKB or Rac, plays a critical role in controlling survival and apoptosis. This protein kinase is activated by insulin and various growth and survival factors to function in a wortmannin-sensitive pathway involving PI3 kinase. Akt is activated by phospholipid binding and activation loop phosphorylation at Thr308 by PDK1 and by phosphorylation within the carboxy terminus at Ser473.

Note: This product is for in vitro research use only