

## PP2A alpha + beta Rabbit mAb

Catalog No: #56095

Package Size: #56095-1 50ul #56095-2 100ul

Orders: order@signalwayantibody.com

Support: tech@signalwayantibody.com

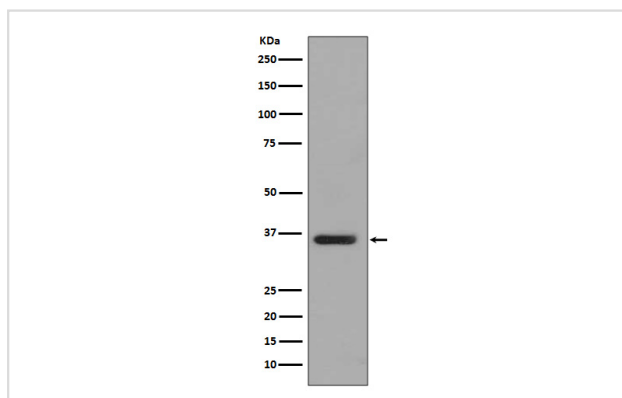
## Description

Product Name	PP2A alpha + beta Rabbit mAb
Host Species	Rabbit
Clonality	Monoclonal
Isotype	Rabbit IgG
Purification	Affinity-chromatography
Applications	WB IHC ICC/IF IP
Species Reactivity	Human Mouse Rat
Specificity	PP2A alpha + beta Antibody detects endogenous levels of total PP2A alpha + beta
Immunogen Description	A synthesized peptide derived from human alpha + beta PP2A
Other Names	PP2A alpha; PP2A beta; Replication protein C; PPP2CA; PPP2CB;
Accession No.	Uniprot:P62714/P67775
Uniprot	P62714/P67775
Calculated MW	36kDa
Formulation	Rabbit IgG in phosphate buffered saline , pH 7.4, 150mM NaCl, 0.02% sodium azide and 50% glycerol.
Storage	Store at +4 $\Lambda$ C short term. Store at -20 $\Lambda$ C long term. Avoid freeze / thaw cycle.

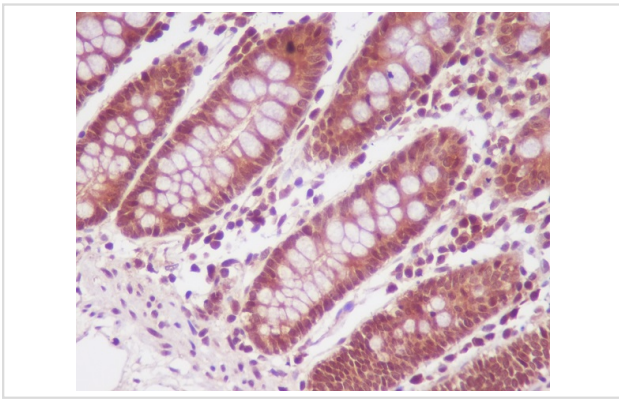
## Application Details

WB:1:500~1:2000 IHC:1:50~1:200 ICC/IF:1:50~1:200 IP:1:50

## Images



Western blot analysis of PP2A alpha+beta expression in T47D cell lysate.



Immunohistochemical analysis of paraffin-embedded human colon, using PP2A alpha + beta Antibody.

## Product Description

Protein phosphatase type 2A (PP2A) is an essential protein serine/threonine phosphatase that is conserved in all eukaryotes. PP2A is a key enzyme within various signal transduction pathways as it regulates fundamental cellular activities such as DNA replication, transcription, translation, metabolism, cell cycle progression, cell division, apoptosis and development. The core enzyme consists of catalytic C and regulatory A (or PR65) subunits, with each subunit represented by  $\alpha$  and  $\beta$  isoforms.

Note: This product is for in vitro research use only