

Lamin B Receptor Rabbit mAb

Catalog No: #56096

Package Size: #56096-1 50ul #56096-2 100ul

Orders: order@signalwayantibody.com

Support: tech@signalwayantibody.com

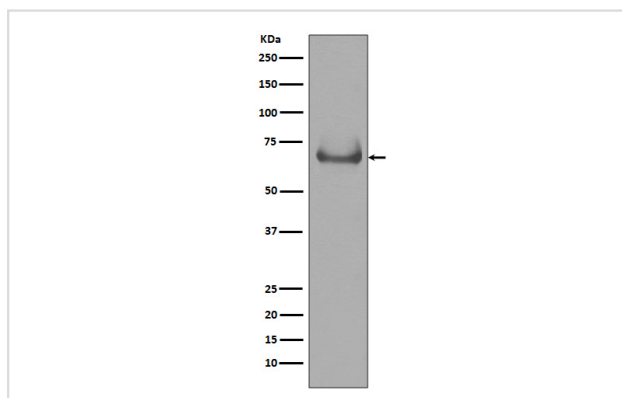
Description

Product Name	Lamin B Receptor Rabbit mAb
Host Species	Rabbit
Clonality	Monoclonal
Isotype	Rabbit IgG
Purification	Affinity-chromatography
Applications	WB IHC ICC/IF IP
Species Reactivity	Human Rat
Specificity	Lamin B Receptor Antibody detects endogenous levels of total Lamin B Receptor
Immunogen Description	A synthesized peptide derived from human Lamin B Receptor
Other Names	PHA; LMN2R; TDRD18; DHCR14B; LBR;
Accession No.	Uniprot:Q14739
Uniprot	Q14739
Calculated MW	70kDa
Formulation	Rabbit IgG in phosphate buffered saline , pH 7.4, 150mM NaCl, 0.02% sodium azide and 50% glycerol.
Storage	Store at +4 Λ C short term. Store at -20 Λ C long term. Avoid freeze / thaw cycle.

Application Details

WB:1:500~1:2000 IHC:1:50~1:200 ICC/IF:1:100~1:500 IP:1:30

Images



Western blot analysis of Lamin B Receptor expression in Jurkat cell lysate.

Product Description

The protein encoded by this gene belongs to the ERG4/ERG24 family. It localized in the nuclear envelope inner membrane and anchors the lamina and the heterochromatin to the membrane. It may mediate interaction between chromatin and lamin B. Mutations of this gene has been associated with autosomal recessive HEM/Greenberg skeletal dysplasia. Alternative splicing occurs at this locus and two transcript variants encoding the same protein have been identified.

Note: This product is for in vitro research use only