

Caspase-7 Rabbit mAb

Catalog No: #56098

Package Size: #56098-1 50ul #56098-2 100ul

Orders: order@signalwayantibody.com

Support: tech@signalwayantibody.com

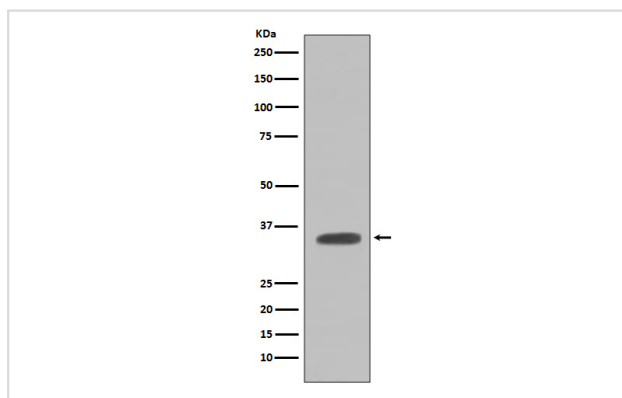
Description

| | |
|-----------------------|--|
| Product Name | Caspase-7 Rabbit mAb |
| Host Species | Rabbit |
| Clonality | Monoclonal |
| Isotype | Rabbit IgG |
| Purification | Affinity-chromatography |
| Applications | WB IHC IP |
| Species Reactivity | Mouse Rat |
| Specificity | Caspase-7 Antibody detects endogenous levels of Caspase-7 |
| Immunogen Description | A synthesized peptide derived from human Caspase-7 |
| Other Names | CMH-1; ICE-LAP3; MCH3; CASP7; Caspase-7; Caspase7; |
| Accession No. | Uniprot:P97864 |
| Uniprot | P97864 |
| Calculated MW | 34kDa |
| Formulation | Rabbit IgG in phosphate buffered saline , pH 7.4, 150mM NaCl, 0.02% sodium azide and 50% glycerol. |
| Storage | Store at +4 Λ C short term. Store at -20 Λ C long term. Avoid freeze / thaw cycle. |

Application Details

WB:1:500~1:1000IHC:1:50~1:200IP:1:50

Images



Western blot analysis of Caspase-7 expression in NIH/3T3 cell lysate.

Product Description

Caspase-7 (CMH-1, Mch3, ICE-LAP3) has been identified as a major contributor to the execution of apoptosis. Caspase-7 is an effector caspase (along with caspase-2 and -3), meaning that it cleaves essential cellular machinery rather than activating other caspases. Caspase-7 is cleaved by many enzymes, including caspases-3, -6, -8, -9 and granzyme B. Once activated, caspase-7 cleaves many of the same substrates as caspase-3, including poly (ADP-ribose) polymerase, or PARP.

Note: This product is for in vitro research use only