

MMP8 Rabbit mAb

Catalog No: #56099

Package Size: #56099-1 50ul #56099-2 100ul

Orders: order@signalwayantibody.com

Support: tech@signalwayantibody.com

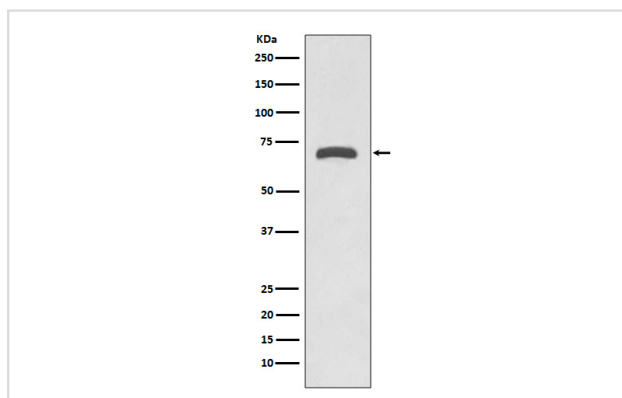
Description

| | |
|-----------------------|--|
| Product Name | MMP8 Rabbit mAb |
| Host Species | Rabbit |
| Clonality | Monoclonal |
| Isotype | Rabbit IgG |
| Purification | Affinity-chromatography |
| Applications | WB IHC ICC/IF IP FC |
| Species Reactivity | Human Mouse Rat |
| Specificity | MMP8 Antibody detects endogenous levels of MMP8 |
| Immunogen Description | A synthesized peptide derived from human MMP8 |
| Other Names | HNC; CLG1; MMP-8; PMNL-CL; COLLAGENASE I; NEUTROPHIL; matrix metalloproteinase 8; |
| Accession No. | Uniprot:P22894 |
| Uniprot | P22894 |
| Calculated MW | 53kDa |
| Formulation | Rabbit IgG in phosphate buffered saline , pH 7.4, 150mM NaCl, 0.02% sodium azide and 50% glycerol. |
| Storage | Store at +4Λ C short term. Store at -20Λ C long term. Avoid freeze / thaw cycle. |

Application Details

WB:1:500~1:2000IHC:1:50~1:200ICC/IF:1:50~1:200IP:1:50

Images



Western blot analysis of MMP8 expression in Human placenta lysate.

Product Description

Proteins of the matrix metalloproteinase (MMP) family are involved in the breakdown of extracellular matrix in normal physiological processes, such as embryonic development, reproduction, and tissue remodeling, as well as in disease processes, such as arthritis and metastasis. Most MMP's are secreted as inactive proproteins which are activated when cleaved by extracellular proteinases. However, the enzyme encoded by this gene is stored in secondary granules within neutrophils and is activated by autolytic cleavage. Its function is degradation of type I, II and III collagens. The gene is

part of a cluster of MMP genes which localize to chromosome 11q22.3.

Note: This product is for in vitro research use only