

## MAD2L1BP Rabbit mAb

Catalog No: #56102

Package Size: #56102-1 50ul #56102-2 100ul

Orders: order@signalwayantibody.com

Support: tech@signalwayantibody.com

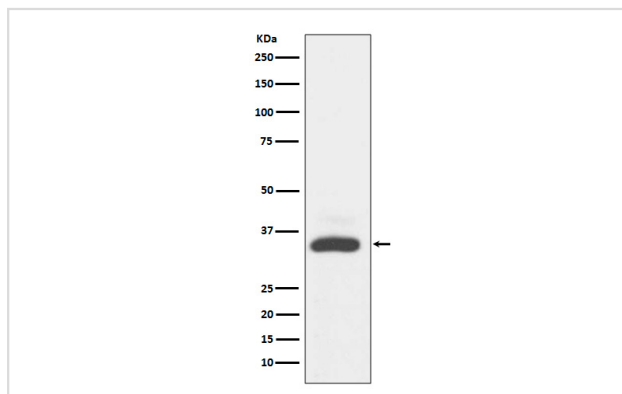
## Description

Product Name	MAD2L1BP Rabbit mAb
Host Species	Rabbit
Clonality	Monoclonal
Isotype	Rabbit IgG
Purification	Affinity-chromatography
Applications	WB IHC ICC/IF
Species Reactivity	Human Mouse Rat
Specificity	MAD2L1BP Antibody detects endogenous levels of MAD2L1BP
Immunogen Description	A synthesized peptide derived from human MAD2L1BP
Other Names	Caught by MAD2 protein; CMT2; KIAA0110; MAD2L1 binding protein; MAD2L1-binding protein; MAD2L1BP; MD2BP; MGC11282; RP1-261G23.6;
Accession No.	Uniprot:Q15013
Uniprot	Q15013
Calculated MW	34kDa
Formulation	Rabbit IgG in phosphate buffered saline , pH 7.4, 150mM NaCl, 0.02% sodium azide and 50% glycerol.
Storage	Store at +4 $\Lambda$ C short term. Store at -20 $\Lambda$ C long term. Avoid freeze / thaw cycle.

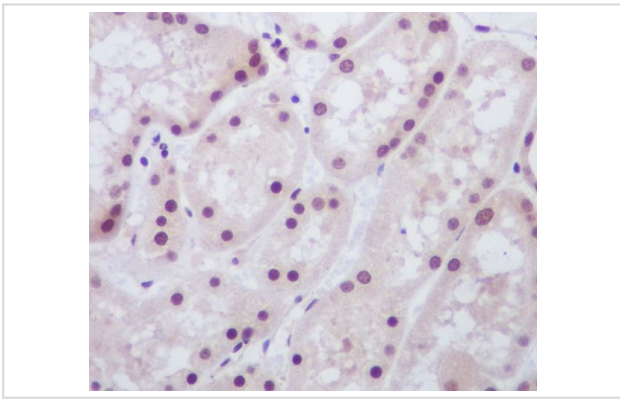
## Application Details

WB:1:500~1:2000IHC:1:50~1:200ICC/IF:1:50~1:200

## Images



Western blot analysis of MAD2L1BP expression in A431 cell lysate.



Immunohistochemical analysis of paraffin-embedded human kidney, using MAD2L1BP Antibody.

## Product Description

May function to silence the spindle checkpoint and allow mitosis to proceed through anaphase by binding MAD2L1 after it has become dissociated from the MAD2L1-CDC20 complex.

Note: This product is for in vitro research use only